

16.5 Mtr Head Frame with Double Drum Winder



Make	Custom	Model	16.5 Mtr Head Frame with Double Drum Winder		
Year		Hours		As at	
Mileage			km	As at	
Serial/VIN			Engine Serial		
Details	<p>16.5 Mtr Head Frame with Double Drum Winder. Wilshaw Engineering Head Frame and Hoist Technologies Australia Double Drum Winder built in 1990 and designed for material movement and man riding. Full print and digital documentation is included as part of the sale. Originally built for Daisy Milano Mine and then operate at the current site until closed the headframe remains fully assembled while the winder and power pack are stored offsite. The 16.5 Mtr Head Frame and Winder are being offered for sale as one package via online auction on an "As Is Where Is" basis ex-site with the Head frame located approx. 75 kms from Leonora Western Australia and the Winder ex-site Southern Cross Western Australia. The buyer is responsible for all dismantling, lifting and buyers transport and must have project removal plan approved by the Mine Manager and removal to be completed within 8 weeks of sale.</p>				

Asking price	AUD	Under review - call for pricing
Ex site	Australia, Western Australia, Leonora	

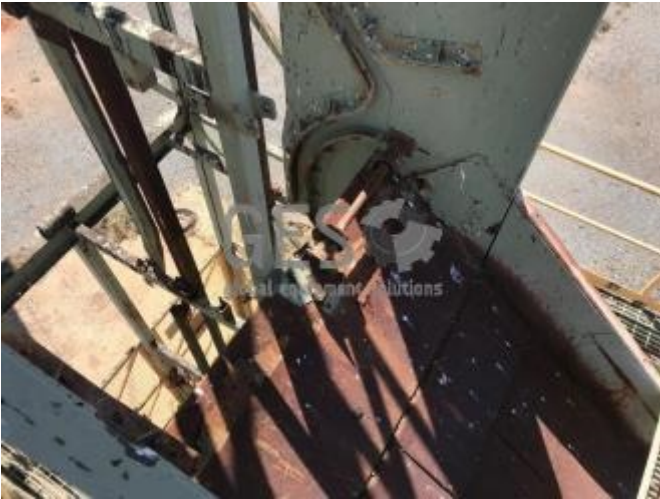
Service history	This head frame and winder package is sold on an "As Is Where Is" basis and has not bene in operation for several years and may require work prior to going back into front line operation.
------------------------	---

**For further details, to make an offer or book an inspection, contact
Global Equipment Solutions on Office: 08 9201 1142**

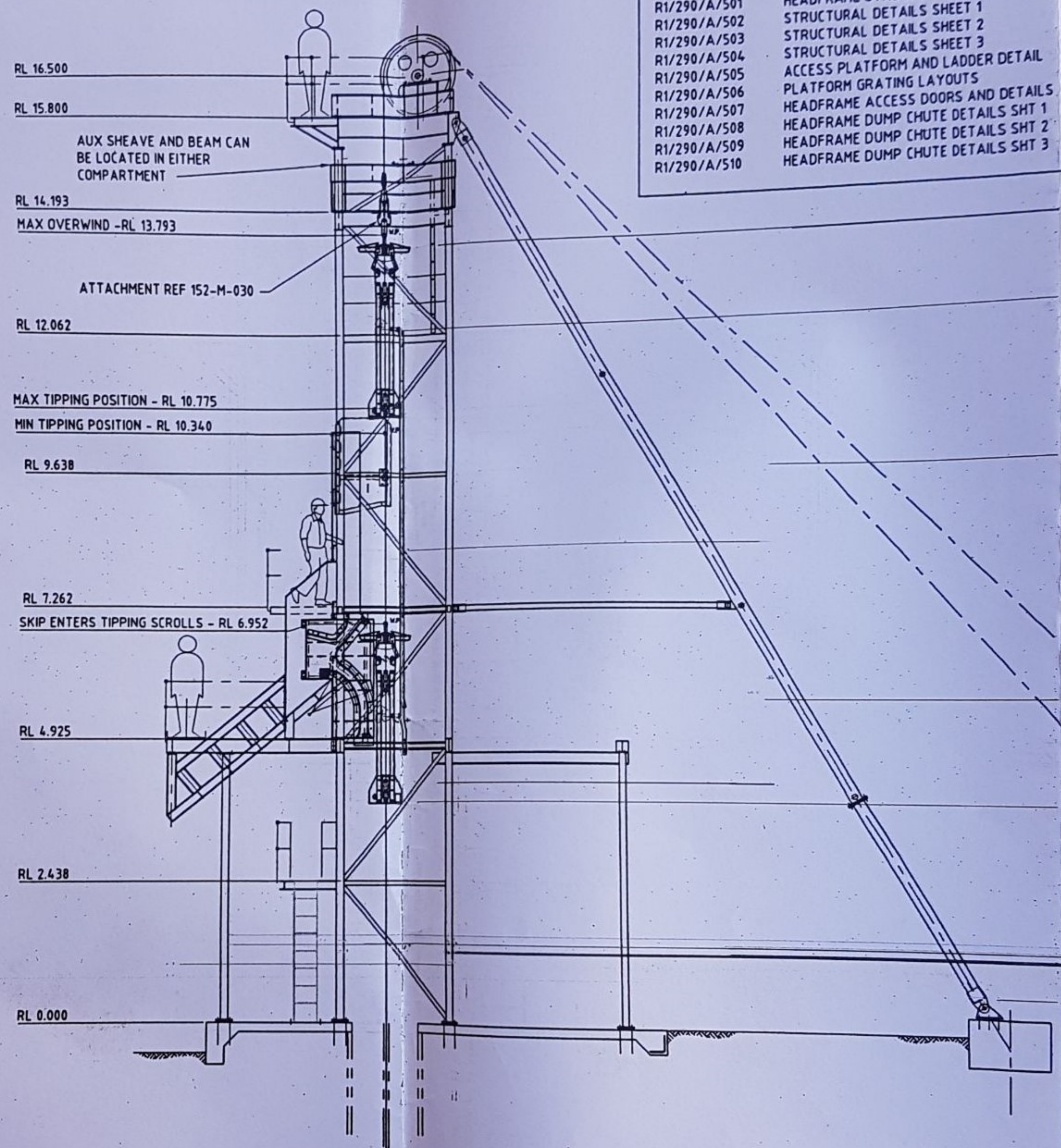
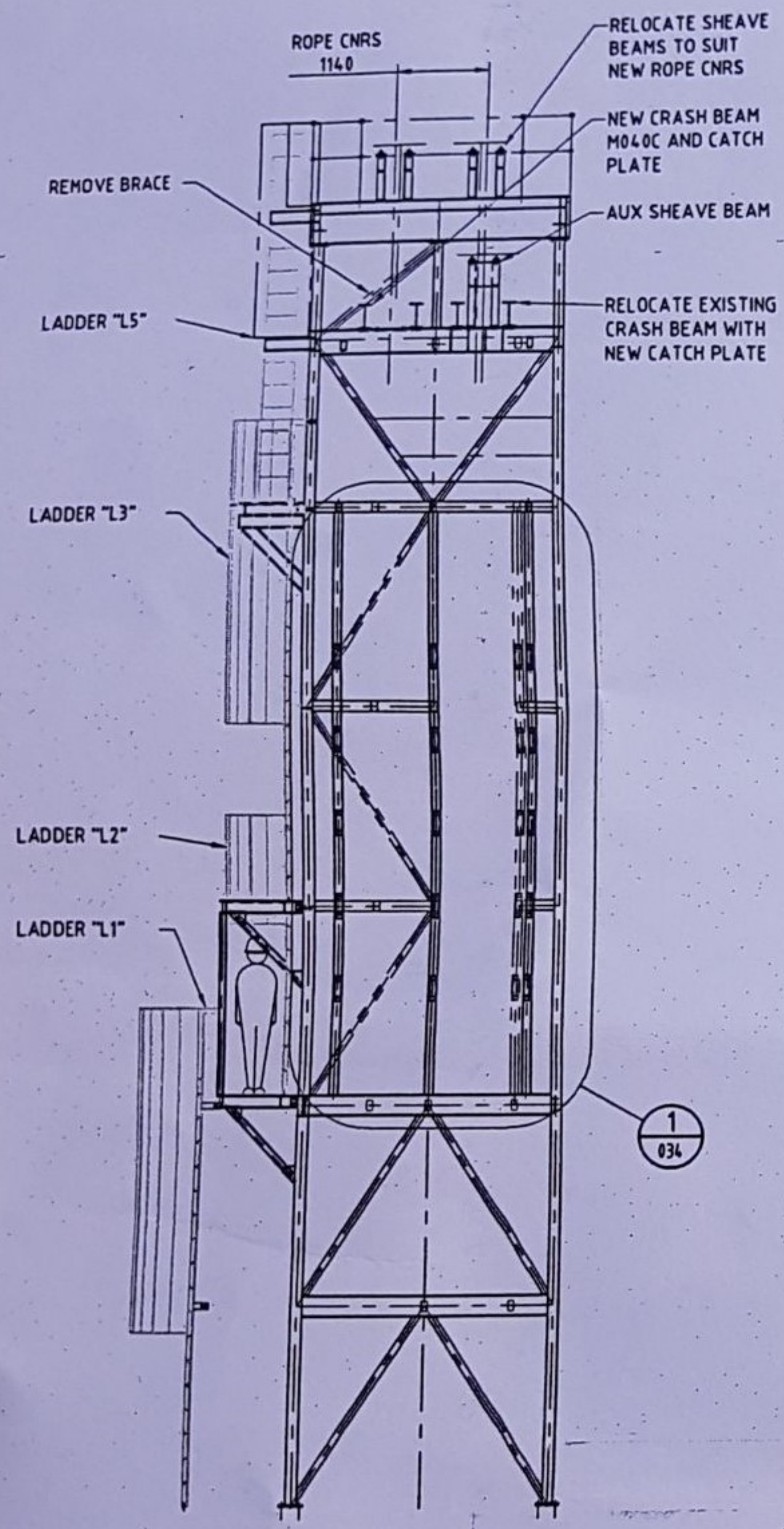






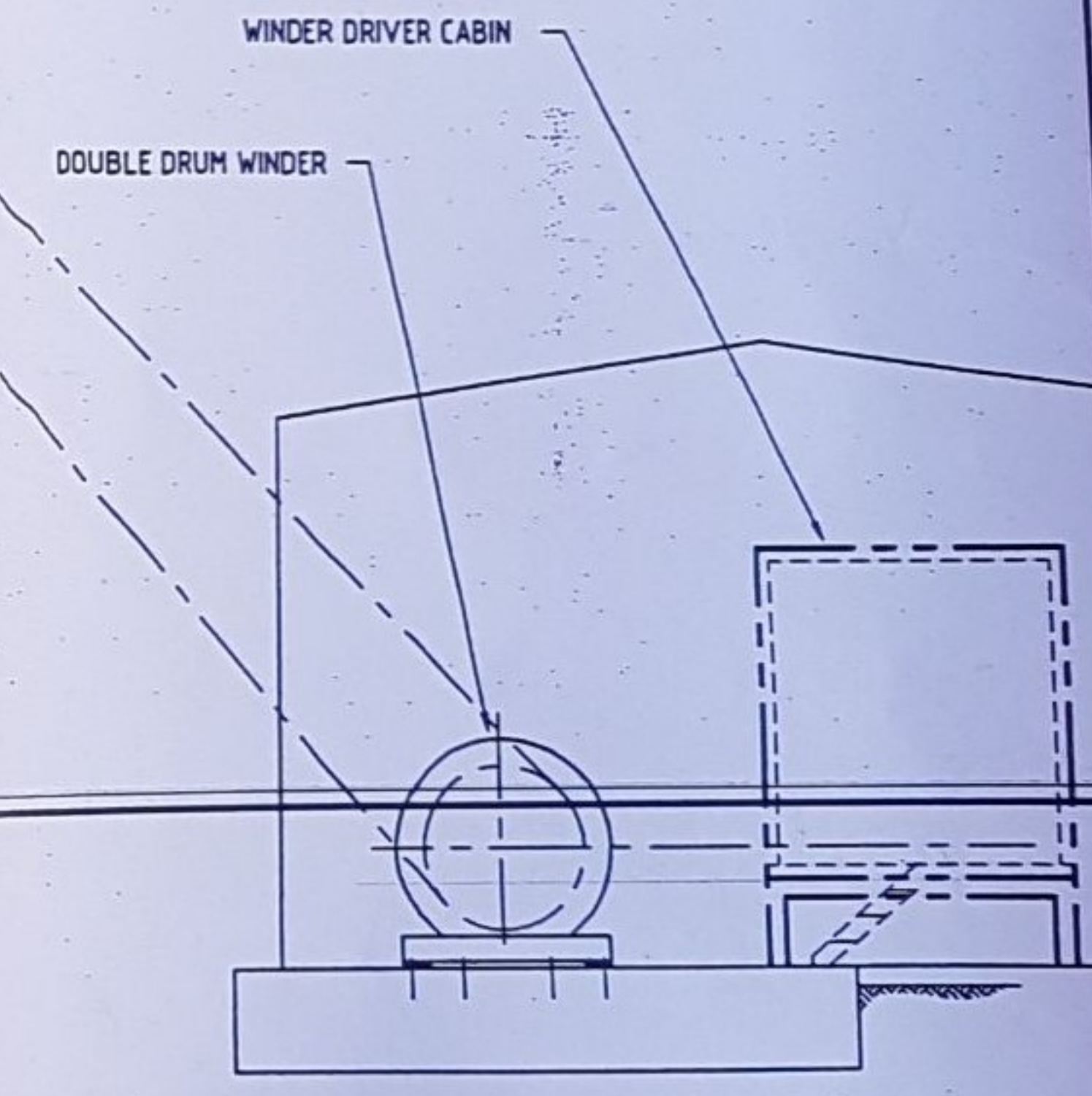






THIS HEADFRAME WAS PREVIOUSLY USED AT DAISY MILANO MINE REFER TO THESE DRAWINGS FOR ORIGINAL CONFIGURATION:-
 R1/290/A/501 HEADFRAME STRUCTURAL ARRANGEMENT
 R1/290/A/502 STRUCTURAL DETAILS SHEET 1
 R1/290/A/503 STRUCTURAL DETAILS SHEET 2
 R1/290/A/504 STRUCTURAL DETAILS SHEET 3
 R1/290/A/505 ACCESS PLATFORM AND LADDER DETAIL
 R1/290/A/506 PLATFORM GRATING LAYOUTS
 R1/290/A/507 HEADFRAME ACCESS DOORS AND DETAILS
 R1/290/A/508 HEADFRAME DUMP CHUTE DETAILS SHT 1
 R1/290/A/509 HEADFRAME DUMP CHUTE DETAILS SHT 2
 R1/290/A/510 HEADFRAME DUMP CHUTE DETAILS SHT 3

- NOTES
1. ALL STEELWORK TO BE IN ACCORDANCE WITH AS 3678, AS 3679 AND AS 1163.
 2. PLATE WORK TO BE GRADE 250. ROLLED OPEN SECTIONS TO BE GRADE 300. CLOSED HOLLOW SECTIONS TO BE GRADE 350.
 3. ALL STEELWORK PLATEWORK FABRICATION TO BE TO AS 3990 1993 & AISC STANDARDISED CONNECTIONS.
 4. ALL PLATES GUSSETS ETC TO BE FROM 10 PLATE U.N.O.
 5. ALL WELDS TO BE 6mm CONTINUOUS FILLET WELD OR FULL PENETRATION BUTT WELD TO AS 1554-PART 1 CAT. S.P. UNO.
 6. ALL BOLTS, NUTS & WASHERS TO BE TO AS 1252 GRADE 8.8/S AND GALVANISED U.N.O.
 7. ALL BOLT HOLES TO BE Ø 22 TO SUIT M20 BOLTS U.N.O.
 8. FABRICATOR TO SUPPLY ALL BOLTS, NUTS & WASHERS & GASKETS ETC. NECESSARY FOR THE ERECTION & ASSEMBLY OF COMPONENTS
 9. SURFACE TREATMENT:- ABRASIVE BLAST CLEAN TO AS 1627.4 CLASS 2.5 APPLY ONE COAT OF INTERSEAL 2020 OR EQUIVALENT TO 150 MICRON DRY FILM THICKNESS, COLOUR TO BE G 53 EUCALYPTUS
 10. ALL STEELWORK TO BE ADEQUATELY MARKED FOR FIELD ASSEMBLY



WILSHAW ENGINEERING IS THE OWNER OF THE COPYRIGHT SUBSISTING IN THIS DRAWING AND THESE DESIGNS, SPECIFICATIONS AND INSTRUCTIONS. THEY MUST NOT BE USED, REPRODUCED OR COPIED IN WHOLE OR IN PART, IN ANY FORM OR BY ANY MEANS WITHOUT PRIOR WRITTEN CONSENT OF WILSHAW ENGINEERING. THIS DRAWING HAS BEEN DELIVERED AND RECEIVED ON THE EXPRESS CONDITION THAT IT MAY ONLY BE USED FOR THE SPECIFIC PURPOSE FOR WHICH IT HAS BEEN PROVIDED. IT MAY NOT BE USED IN ANY WAY WHICH MAY CAUSE LOSS OR HARM TO WILSHAW ENGINEERING OR ANY RELATED CORPORATION AND WILL BE RETURNED TO WILSHAW ENGINEERING IMMEDIATELY ON COMPLETION OF THE TASK FOR WHICH IT HAS BEEN PROVIDED OR ON DEMAND.

DRAWING No.	REFERENCE DRAWING	No.	BY	DATE	REVISION	CHK'D	APP'D	DRAWN	DATE
152-M-040	DETAILS		BEKS	13.09.06	ISSUED FOR CONSTRUCTION			BEKS	SEPT
152-M-039	DETAIL PLANS		BEKS	1.09.06	ISSUED FOR CLIENT REVIEW				
152-M-038	DETAIL PLANS								
152-M-037	SKIP TIPPING SCROLLS								
152-M-036	UPPER CHUTE MODIFICATIONS								
152-M-035	ORE CHUTE MODIFICATIONS								
152-M-034	ARRANGEMENT PLANS								

PROJECT APPROVED	BY	DATE
DESIGN APPROVED	GW	SEPT 06
DESIGNED	GCR	AUG 06
CHECKED		
DRAWN	BEKS	SEPT

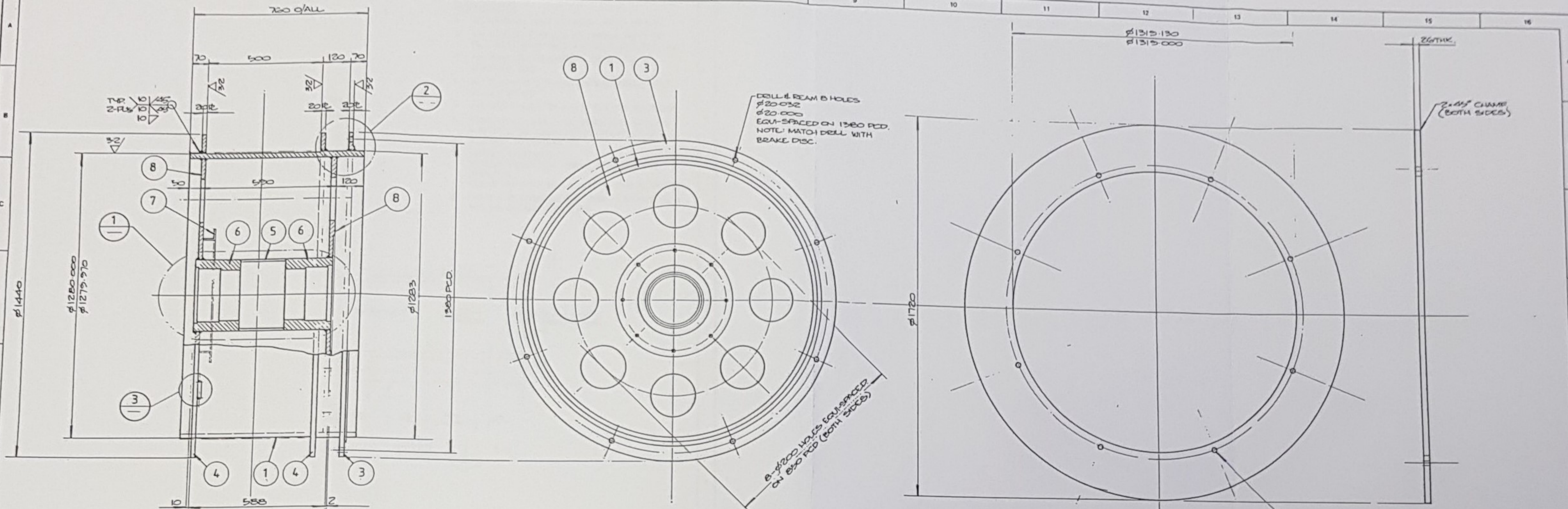


CLIENT
INTERNATIONAL GOLDFIELDS
 TITLE **TIMONI SHAFT HAULAGE SYSTEM HEADFRAME AND WINDERS EX DAISY MILANO GENERAL ARRANGEMENT**

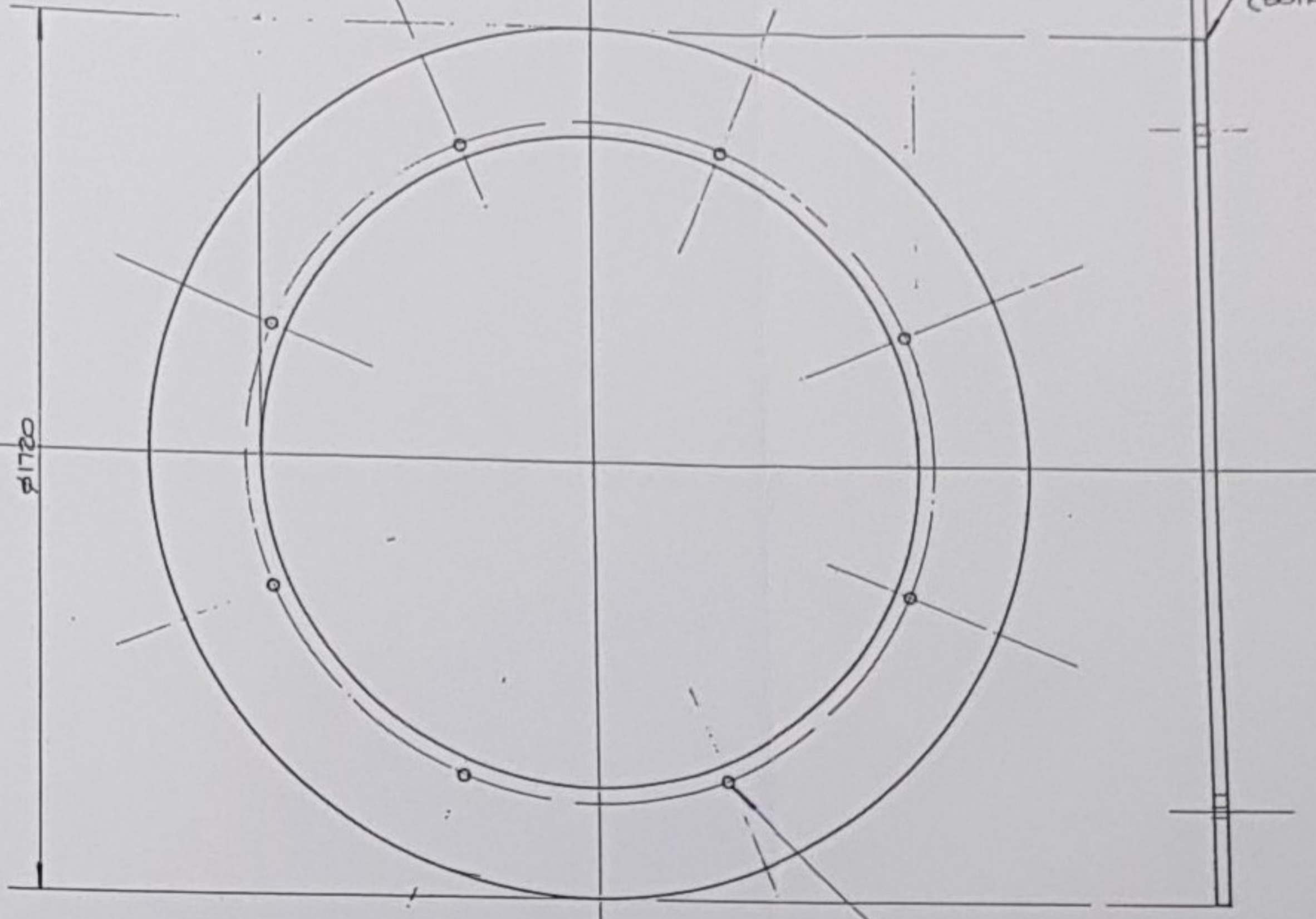


CONSULTING ENGINEERS
 PO Box 421 Belmont WA 6980
 Phone (08) 9479 0800
 Fax (08) 9478 2834

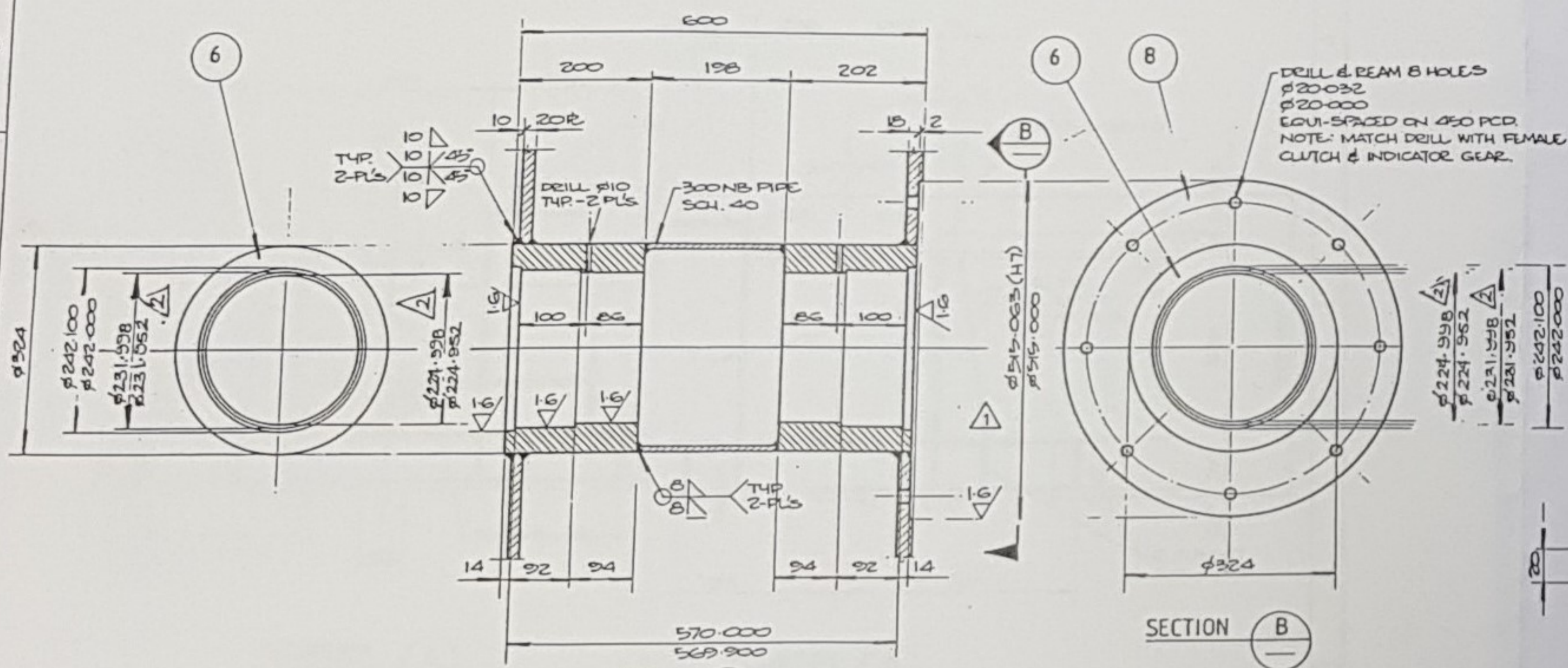
SCALE 1:50	UNLESS OTHERWISE NOTED ALL DIMENSIONS ARE IN MILLIMETRES
JOB No. 3517	A1
DRAWING No. 152-M-033	REV. 0
- DO NOT SCALE - - IF IN DOUBT ASK -	



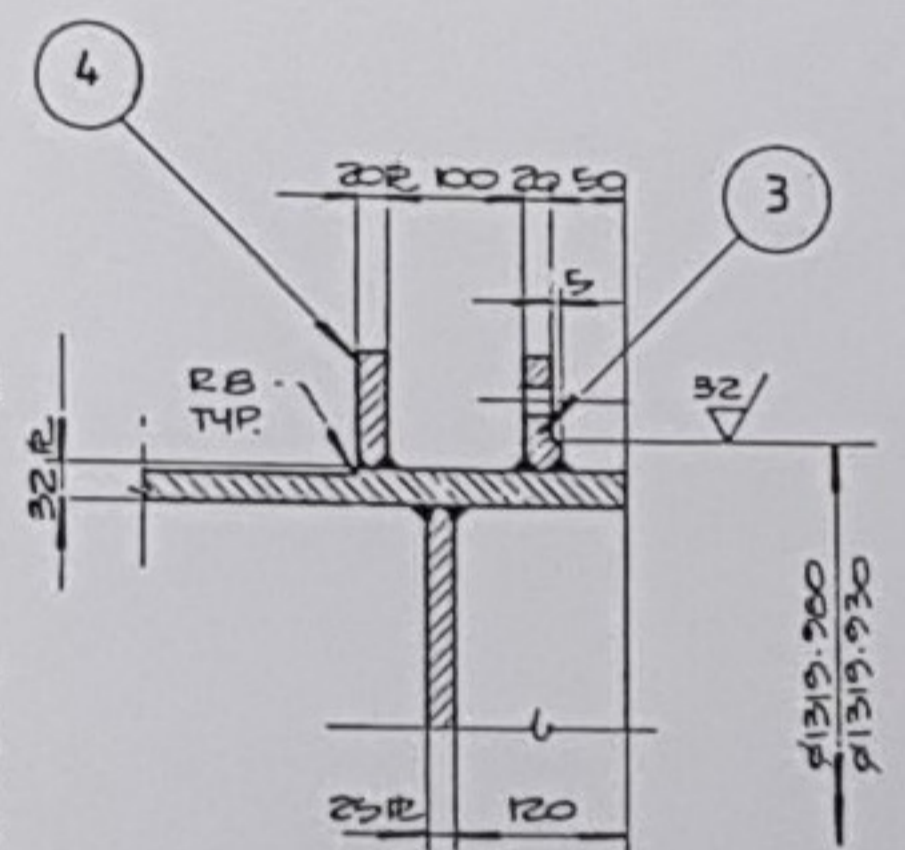
WINDER DRUM ARRANGEMENT 1:75



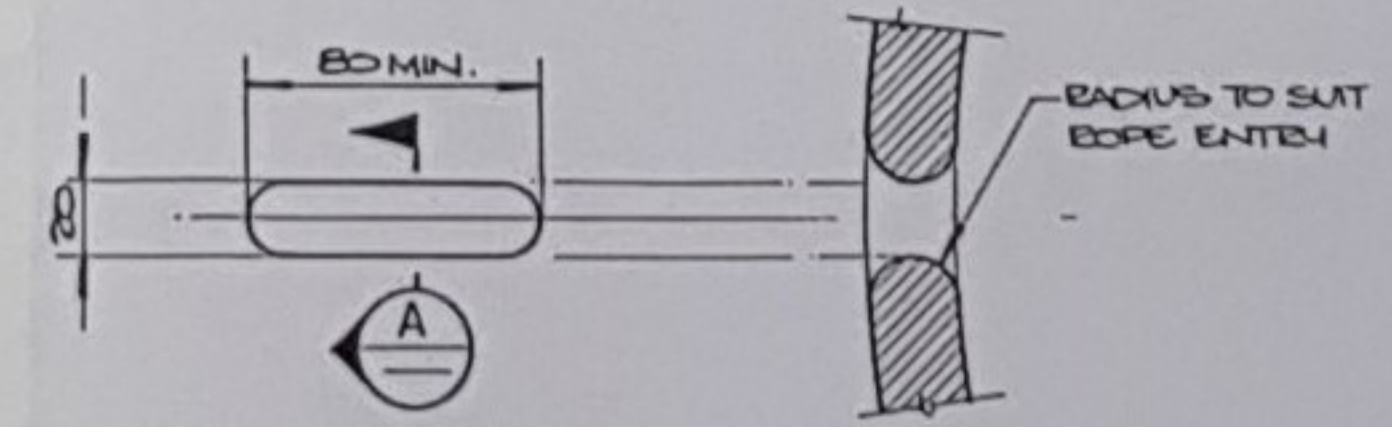
BRAKE DISC ITEM 2 1:75



DETAIL 1 1:5



DETAIL 2 1:5



ROPE ENTRY-DETAIL 3 SECTION A 1:2

- GENERAL NOTES**
1. ALL MATERIAL TO BE TO AS 1204 GRADE 250 UNO.
 2. ALL STEELWORK AND FABRICATION TO BE TO AS 1250 UNO.
 3. ALL BOLTS, NUTS AND WASHERS TO BE TO AS 1252 GRADE 8.8 UNO.
 4. ALL WELDING TO BE IN ACCORDANCE WITH AS 155-85 SP WITH MAGNETIC PARTICLE INSPECTION UNO.
 5. DRUM TO BE STRESS RELIEVED ONLY AFTER FABRICATION AND MACHINING IS COMPLETE.
 6. FINAL MACHINING TO BE CARRIED OUT ONLY AFTER DRUM STRESS RELIEVING.
 7. SURFACE TREATMENT: COATING SYSTEM No.4 PREVIOUSLY UNCOATED SURFACES. COLOUR: INTERNATIONAL ORANGE - R11 TO AS 2700 AS SPECIFIED.

ITEM	QTY	DESCRIPTION	MATERIAL
8	2	DRUM FLANGE - 1219.00 x 20R	MS.
7	1	50 x 50 x 6L x 1570 LG.	MS.
6	2	DRUM HUB - 324 OD x 200 LG.	MS.
5	1	300NB PIPE - 198 LG. SCH. 40	
4	2	ROPE FLANGE - 1440 OD x 20R	MS.
3	1	BRAKE DISC MOUNTING FLG. - 1440 OD x 25R	MS.
2	1	BRAKE DISC - 1720 OD x 26THK. EX. 32R. GPE. 350	
1	1	DRUM - 700 x 32R x 4031 LG.	MS.

PROJECT APPR. _____ DATE _____ DESIGN APPR. _____ DRAWN VAGNONI MAY 90				CLIENT AMALG SYNDICATE TITLE SPARGOVILLE NICKEL DOUBLE DRUM WINDER DRUM AND BRAKE DISC - CLUTCH DRUM DETAILS SCALE AS SHOWN DRAWING No. 0009-M-101	
0009-M-100 DOUBLE DRUM WINDER - GENERAL ARRANGEMENT REFERENCE DRAWING		2 R.B. 25-790 DRUM TOLERANCES CHANGE 1 R.V. 27-690 DIA. WAS 520 0 R.V. 19-6-90 ISSUED FOR CONSTRUCTION A R.V. 24-5-90 ISSUED FOR TENDER		HOIST TECHNOLOGIES AUSTRALIA PTY. LTD.	