



# NIFTY COPPER PTY LTD

## STRIP AND QUOTE HLX5T ROCKDRILL

### Sandvik Mining and Construction Pty Ltd Australia

Customer: NIFTY COPPER PTY LTD Date: 09/07/2019 Job number: 7393445

Your STRIP AND QUOTE HLX5T ROCKDRILL: **HLX5T KIT**, S/No **T048236** arrived in our rebuild centre on the 28/06/2019 with 1000 hours.

The following parts were missing from the STRIP AND QUOTE HLX5T ROCKDRILL when it arrived;  
Missing 1 x flushing head mount bolt

#### Strip down Inspection:

80cc motor fitted.

The rockdrill was sent in for scheduled service after 1000 percussion hours since previous rebuild.

Upon dismantling the percussion circuit was found water contaminated which has most likely occurred only recently/shortly before removal as there is minimal evidence of subsequent damage or increased wear rates.

#### Recommendations:

Investigate source of water contamination, check oil coolers etc.

#### Machining required:

Yes

Fixed Service Charge	\$ 1,932.00
Cost of recommended replacement parts	\$ 10,220.33
Cost of recommended machining repairs:	\$ 759.00

**Total cost of service and recommendations: \$ 12,911.33**

The attached report details the condition of your STRIP AND QUOTE HLX5T ROCKDRILL using the Sandvik Standard Reporting documentation used in our Sandvik repair facility. All images shown in this report will detail components requiring attention.

If you have any queries regarding this report, please contact

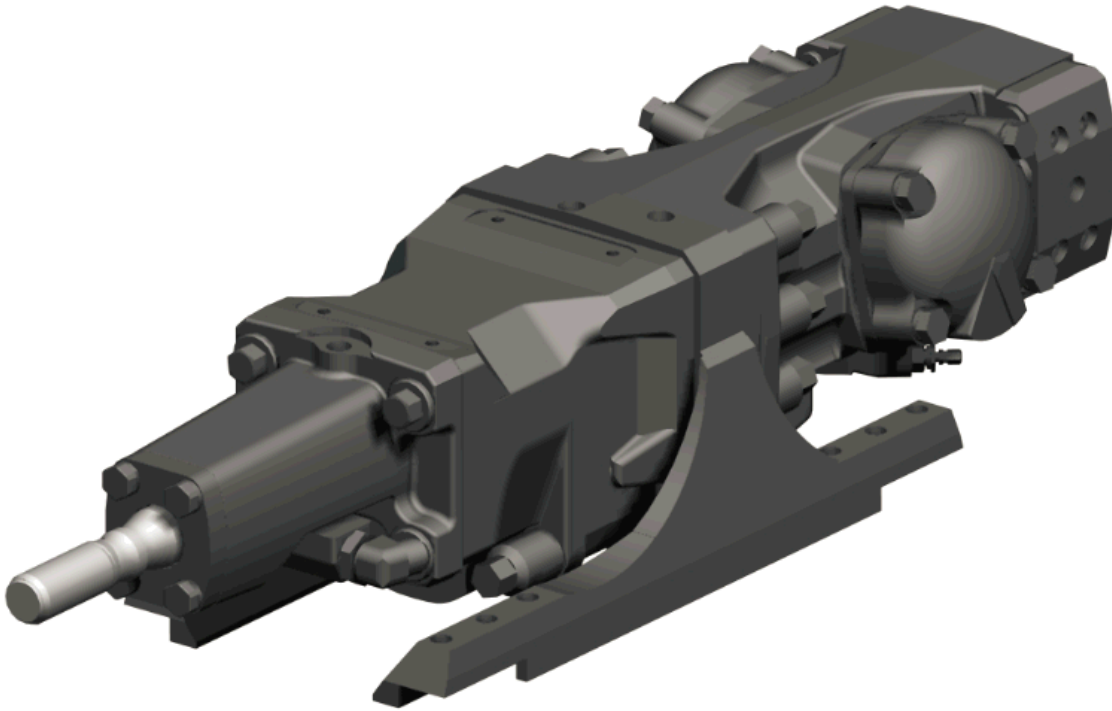
Name: Ben Rothen

Phone: 0437436 106

Email: [ben.rothen@sandvik.com](mailto:ben.rothen@sandvik.com)

## Equipment

---



### Condition on arrival

---

**Comment**

Arrived in a steel box. Complete with flushing head, seal carrier and shank.

**Last rebuilt by**

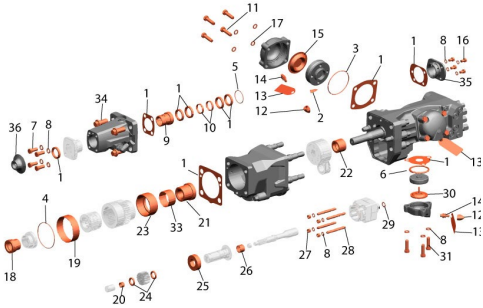
Sandvik

**Picture 1****Picture 2**

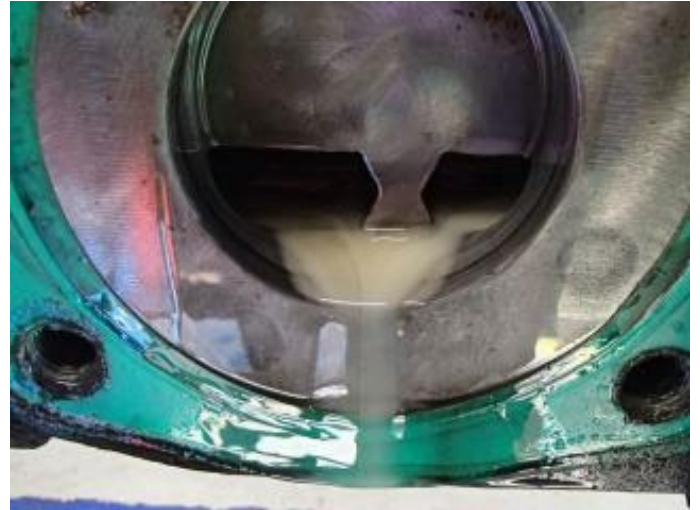
**ENDURANCE KIT**

<b>Parts</b>	<b>Condition Code Index</b>	4 - Damaged	8 - Contamination
	1 - Service Item	5 - Misalignment	9 - Scored
	2 - Missing	6 - Non OEM Parts	10 - Reuse
	3 - Worn beyond limits	7 - Lack of Lubrication	11 - Refer to Comments

Ref.	Part Description	Qty	Cond. code	Comment
*	ENDURANCE KIT	1	1	Endurance kit to be fitted at rebuild which includes all items highlighted in Orange on this page.

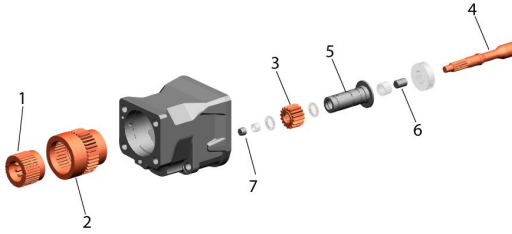


Water contaminated percussion circuit.



**ROTATION KIT WF**

<b>Parts</b>	<b>Condition Code Index</b>	4 - Damaged	8 - Contamination
	1 - Service Item	5 - Misalignment	9 - Scored
	2 - Missing	6 - Non OEM Parts	10 - Reuse
	3 - Worn beyond limits	7 - Lack of Lubrication	11 - Refer to Comments



Ref.	Part Description	Qty	Cond. code	Comment
1	COUPLING - INC ROTATION KIT	1	3	The coupling is worn near to service limit at the internal splines.
4	SHAFT, ROTATING - INC ROTATION KIT	1	3	The rotation shaft has worn at the seal journal, spigot bearing journal and internal splines.

1 The coupling is worn near to service limit at the internal splines.

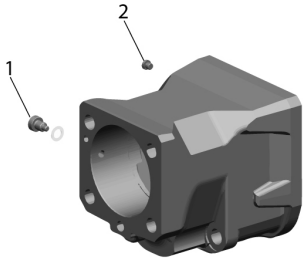


4 The rotation shaft has worn at the seal journal, spigot bearing journal and internal splines.



**GEAR BOX**

Parts	<b>Condition Code Index</b>	4 - Damaged	8 - Contamination
	1 - Service Item	5 - Misalignment	9 - Scored
	2 - Missing	6 - Non OEM Parts	10 - Reuse
	3 - Worn beyond limits	7 - Lack of Lubrication	11 - Refer to Comments



Ref.	Part Description	Qty	Cond. code	Comment
1	SCREW	1	1	

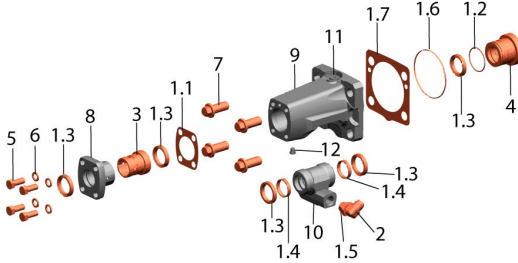
The gearcase requires a light skim to the worn front face.



**FLUSHING KIT D45**

<b>Parts</b>	<b>Condition Code Index</b>	4 - Damaged	8 - Contamination
	1 - Service Item	5 - Misalignment	9 - Scored
	2 - Missing	6 - Non OEM Parts	10 - Reuse
	3 - Worn beyond limits	7 - Lack of Lubrication	11 - Refer to Comments

Ref.	Part Description	Qty	Cond. code	Comment
*	FLUSHING HEAD REBUILD KIT - INCLUDES BG0800869	1	1	The shank bush is worn to limit at the striker face but included in the flushing head rebuild kit.



\* The shank bush is worn to limit at the striker face but included in the flushing head rebuild kit.



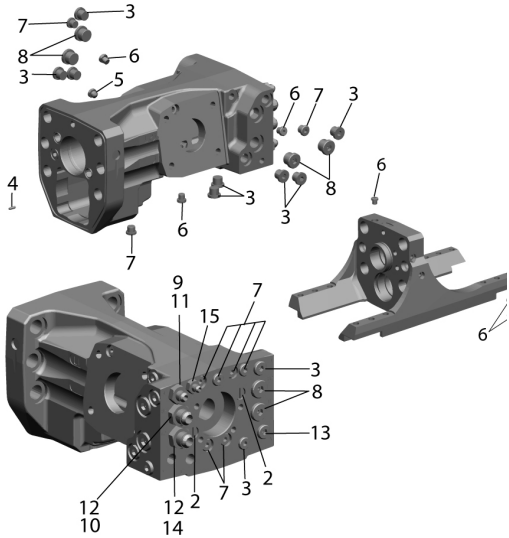
The flushing head body requires repair to the seal carrier seat and a light skim to the rear face.





**BODY FITTING KIT**

<b>Parts</b>	<b>Condition Code Index</b>	4 - Damaged	8 - Contamination
	1 - Service Item	5 - Misalignment	9 - Scored
	2 - Missing	6 - Non OEM Parts	10 - Reuse
	3 - Worn beyond limits	7 - Lack of Lubrication	11 - Refer to Comments



Ref.	Part Description	Qty	Cond. code	Comment
*	BODY FITTINGS	1	1	

