

2010 Normet 1610B Explosive Charge Rig CU002



Make	Normet		Model	1610B		
Year	2010	Hours	5000		As at	01/12/2019
Mileage				km	As at	
Serial/VIN	992			Engine Serial		
Details	<p>2010 Normet 1610B Explosive Charge Rig Asset no CU002. Set up with ANFO Kettles this Charmec presents in good condition with less approximately 5,000 frame hours and was refurbished by Normet in late 2017. Available on an "As Is Where Is" basis running to. Offered for sale via online auction ex Site Nifty Copper Mine via Telfer Western Australia, running to drive on to buyers transport. See Google Maps link: https://goo.gl/maps/Xvaa3uBAFso9MP7A8</p>					
Asking price	AUD	Under review - call for pricing				
Ex site	Australia, Western Australia, Telfer					
Service history	Approximately 5,000 frame hours and was refurbished by Normet in late 2017.					

**For further details, to make an offer or book an inspection, contact
Global Equipment Solutions on Office: 08 9201 1142**













4.1.15 CU002 DEVELOPMENT CHARGE UP NORMET 1610B

- Front and rear axles replaced (new) July 2019.
- OPEX budgeted rewire Q3 FY2020 scheduled.- not complete

Asset Number	Model	Serial Number	Current SMU reading (hrs)	All-time SMU
CU002	1610B	251A	5000	5000

4.1.16 CU002 SUMMARY

Run, rewire dash and cab OPEX.

DATA SHEET

OWNER	METALS X
LOCATION OF EQUIPMENT	EMULSION PLANT
EQUIPMENT NUMBER	1600-CU002
PLANT SERIAL NUMBER	251A
REGISTRATION NUMBER	WAH19590
DESIGN APPROVAL NUMBER	NA
LAST INSPECTION DATE	10/06/2018
NEXT INSPECTION DATE	10/06/2019
MANUFACTURER	NORMET
MANUFACTURE DATE	1/01/2010
MODEL	NBB3S
PLANT TYPE / DESCRIPTION	ELEVATING WORK PLATFORM – BOOM TYPE
MRC	500KG
GROUP / TYPE	GROUP B & TYPE 2/3



ASSET MANAGEMENT ENGINEERS

ENTERED
13 AUG 2018
LOUISE

PO BOX 421,
BELMONT, WA, 6984

Phone: (08) 9466 7444

Fax: (08) 9466 7499

Website: www.asseteng.com.au

STATUTORY INSPECTION REPORT

ELEVATING WORK PLATFORM - BOOM TYPE

1600-4002 .

Owner's Plant No: CU002

EWP Serial No: 251A

Design Registration No: WAH19590

Manufacturer: Normet

Manufacture Date: 01/01/2010

Model: NBB3S

Description: Elevating Work Platform - Boom Type

MRC: 300kg (1person + 220kgs)

Inspection Date: 10/06/2018

Job No: 4816

Owner: Metals X

Site: Nifty

Location: Emulsion Plant

Site Contact: Louise Johnston / Yolanda Ryan

Group / Type: Group B & Type 2/3 (AS 1418.10:2011)

Maximum Lift Height: TBA

I have inspected this Elevating Work Platform in accordance with Regulation 6.40(1) of the Mines Safety and Inspection Regulations 1995 and sections of AS 1418.1:2002, AS 1418.10:2011, AS 2550.1:2011 and AS 2550.10:2006 and assessed that it is suitable for continued operation subject to the following Non-Compliance(s) being rectified:-

Non-Compliance(s):

Nil.

Recommendation(s):

1. Provide evidence of major inspections carried out on the stabiliser arms during the boom section replacement.
2. Safe Approach distance powerlines decal to be fitted in the work basket.

Inspection Note(s):

3. Considering boom section replaced in 2017, as major inspection, next major inspection to be carried out in 2027.

Inspector's Name: Suresh Ramar

Inspector's Signature:

Report QA Checked by: Fang Wang

Report QA Signature:

Next Inspection due: 10/06/2019

(AS2550.10:2006)

Next Statutory Inspection due on or before:

10/06/2020

(MSIR 1995 - Regulation 6.40, Schedule 3)

C: Complies DNC: Does Not Comply NA: Not Applicable NI: Not Inspected

Page 1 of 6

EQUIPMENT DATA / INFORMATION	C	DNC	NA/NI	COMMENTS
Unique Identity Number	✓			CU002
Registration Number	✓			WAH19590
Evidence of Registration	✓			Available
Operators / Maintenance Manuals	✓			Available
Manufacturers Data Label	✓			Displayed
i) Manufacturer's Details	✓			Normet
ii) Model	✓			NBB3S
iii) Serial Number	✓			251A
iv) Year of Manufacture	✓			2010
v) Rated Capacity	✓			300kg
vi) Max Allowable Manual Force	✓			0.4kN
vii) Max Allowable Wind Speed	✓			12.5m/s
viii) Max Chassis Inclination	✓			3
ix) Insulation Rating (if applicable)			NA	
x) Compliance Statement to AS1418	✓			Yes
EQUIPMENT HISTORY / MAINTENANCE	C	DNC	NA/NI	COMMENTS
Past Inspection Reports	✓			Available
Test Certificates	✓			Available
Logbook Available and Being Used	✓			Sighted
Routine Maintenance	✓			In CMMS
Annual Maintenance	✓			In CMMS
Major Inspections (10 yr.)	(1) (2) ✓			10 yearly major done by 2017
Prior Damage / Repairs	✓			In CMMS
BOOM / CHASSIS	C	DNC	NA/NI	COMMENTS
Chassis	✓			Complies
Boom Sections	✓			Complies
Welds	✓			Complies
Bolted Connections	✓			Complies
Platform Connection	✓			Complies
Boom Locking Pins	✓			Complies
Slew Mechanism / Bolts / Locking Pin	✓			Complies
Boom Safety Prop (if Applicable)			NI	
Transport Supports / Cradle	✓			Complies
Wire Rope / Chain / Cable	✓			Complies
Lubrication	✓			Complies
Tyres	✓			Complies
Tyre Pressure Decal (Pneumatic Tyres)	✓			Complies
Tyre Weight Decal (Foam Filled Tyres)			NA	

C: Complies DNC: Does Not Comply NA: Not Applicable NI: Not Inspected

Page 2 of 6

BOOM / CHASSIS	C	DNC	NA/NI	COMMENTS
Maximum Point Load Decals	✓			Sighted
Guards (Engine, Hazardous Areas)	✓			Complies
Battery (Secure, Ventilation)	✓			Complies
Fuel Tank and Decal	✓			Complies
Lights / Indicators	✓			Complies
HYDRAULICS	C	DNC	NA/NI	COMMENTS
Secure and Free of Damage / Leaks	✓			No evidence of leaks
Load Holding Valves	✓			No evidence of leaks
Tank Fluid Level Indicator	✓			Fitted
STABILITY	C	DNC	NA/NI	COMMENTS
Inclination Indicator (eg. Audible Alarm. Type 1 may only have Spirit Level)	✓			Audible alarm and spirit level
Stabilizers	✓			Complies
Feet Accommodate 10° Unevenness	✓			Complies
Decal Stating Stabilizers Must Be Used	✓			Complies
Secure In Transport Position	✓			Complies
Interlock to Prevent Platform Movement Outside Permitted Positions Until Stabilizers In Place	✓			Complies
Interlock to Prevent Stabilizer Movement If Work Platform Is Not Stowed or Outside Permitted Range	✓			Complies
WORK PLATFORM	C	DNC	NA/NI	COMMENTS
Decal Condition	✓			Fitted and complies
i) Rated Capacity (kg)	✓			
ii) Rated Capacity (no. people + kg)	✓			
iii) Max Manual Force (N)	✓			
iv) Max Wind Speed	✓			
v) Insulated or Non-Insulated	✓			Non- insulated
v) Insulation Rating (if applicable)			NA	
vi) Safe Approach Distance Powerlines			NI	
vii) Anchor Points (no. of people)	✓			1 person
Handrails (> 950mm high)	✓			Complies
Intermediate Rails (< 550mm from Top Rail and	✓			Complies
Toe Board (> 100mm high)	✓			Complies
Vertical Rails (< 180mm gap)	✓			Complies
Grab Rail (Recommended)	✓			Complies
Guard Above Controls (> 50mm)	✓			Complies
Floor (Min dimension < 15mm)	✓			Complies
Gates (Self closing / latching)	✓			Complies

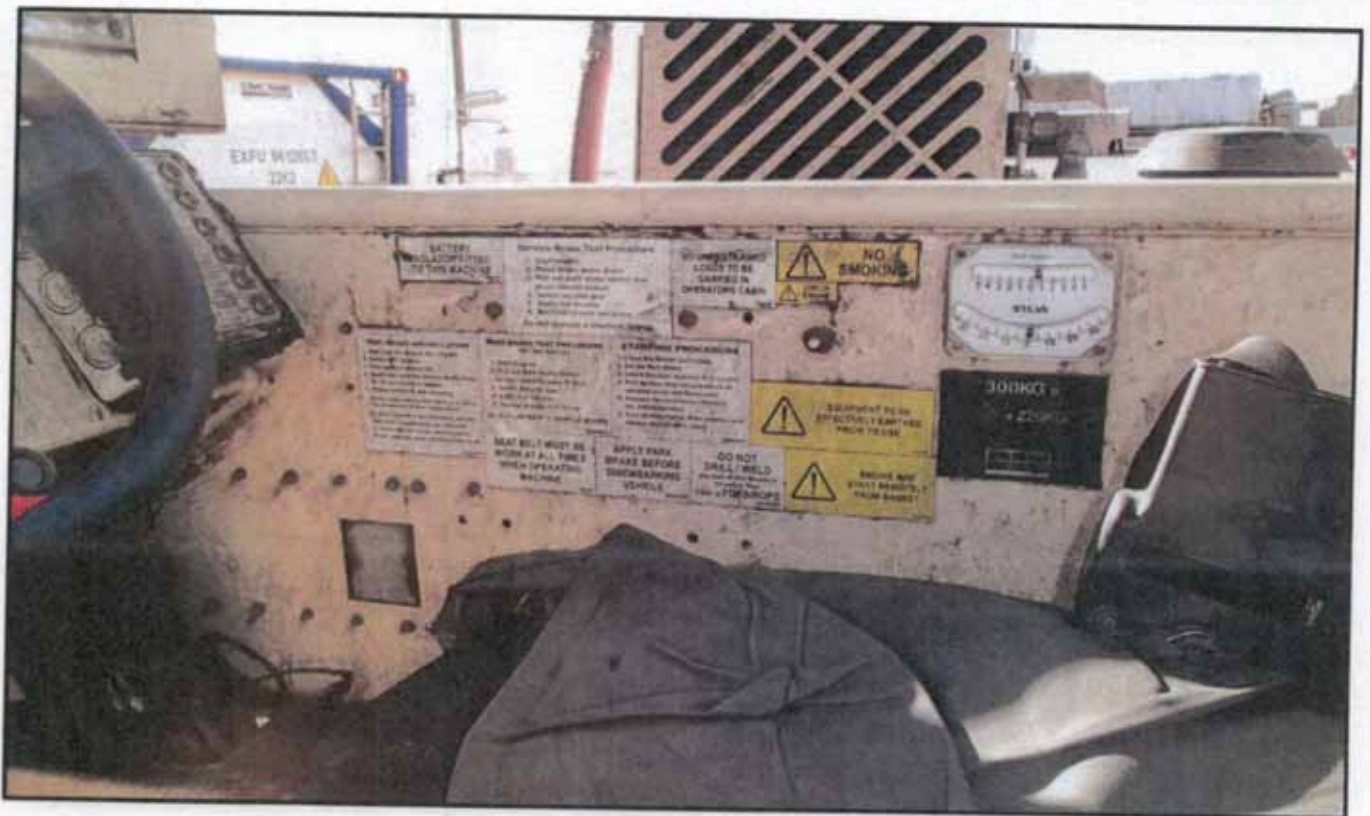
C: Complies DNC: Does Not Comply NA: Not Applicable NI: Not Inspected

WORK PLATFORM	C	DNC	NA/NI	COMMENTS
Anchorage points	✓			Complies
Crush Zone Guards / Protection			NA	
CONTROLS	C	DNC	NA/NI	COMMENTS
Labels	✓			Complies
Free of Damage	✓			Complies
Hold to Run	✓			Complies
Protected from Unintentional Activation	✓			Complies
Safe Location for Operator	✓			Complies
Located Away From Exhaust	✓			Complies
Operators Have A Visual of Corresponding Movement	✓			Complies
Only Selected Control Station is Active	✓			Complies
Ground Controls Can Override Platform	✓			Complies
Emergency Stops	✓			Functioning
No Unauthorized Use (ie. Key Start)	✓			Complies
Horn in Platform (Type 3 only)	✓			Complies
Means of Communication With Driver	✓			Hand signal and Two way radio
TRAVEL / MOVEMENT	C	DNC	NA/NI	COMMENTS
Interlock fitted (Pedestrian Controlled and Type 1 EWP's) to prevent travel while work platform is out of stowed position.	✓			Visually OK
Max Travel Speed 1.7m/s (Pedestrian Controlled EWP's) 1.5m/s (Type 3 Vehicle Mounted) 3.0m/s (Type 3 Rail Mounted) 0.7m/s (All Other Type 3).	✓			Visually OK
Max Slew Speed 1.4m/s (Horizontal Speed at Outer Edge of Platform At Max Range)	✓			Visually OK
Max Platform Raise / Lower Speed 0.8m/s	✓			Visually OK
Max Telescoping Speed 0.8m/s	✓			Visually OK
Brakes (Travel Movement)	✓			Complies
Brakes (All Drives)	✓			Complies
Smoothness and Limits of Motion	✓			Complies
Platform Automatic Levelling (< 5° variation)	✓			Complies
EMERGENCY LOWERING	C	DNC	NA/NI	COMMENTS
Controls and Instructions	✓			Functioning
Overrides Platform E-Stop	✓			Functioning
Functional Test	✓			Tested

C: Complies DNC: Does Not Comply NA: Not Applicable NI: Not Inspected

Page 4 of 6

OTHER	C	DNC	NA/NI	COMMENTS
Ancillary Equipment			NA	
Additional Items Specified By Manufacturer			NA	



C: Complies DNC: Does Not Comply NA: Not Applicable NI: Not Inspected

Normet
 Normet Oy
 Munkkiniemi 0
 FINLAND

TYPE	BASKET BOOM
MODEL	NBB3S
SERIAL NO	251A
YEAR OF MANUFACTURE	2010/17
POWER	kW
TOTAL WEIGHT	kg
EXTERNAL POWER SUPPLY :	
● MAX HYDR PRESSURE	bar
● OIL FLOW NEEDED	l/min
● ELECTRICS	V Hz
● MAX AIR PRESSURE	bar
MAX LOAD ON WORK PLATFORM	
● NAMED LOAD	300 kg
● PERMISSIBLE LOAD	220 kg
● DEF. LOAD	0.4 kN
● MAX WIND SPEED	12.5 m/s
● MAX HORIZONTAL TILT	3 °

! (Warning symbol)
 (Open book icon)





ASSET MANAGEMENT ENGINEERS

PO BOX 421, BELMONT, WA, 6984

Phone: (08) 9466 7444

Fax: (08) 9466 7499

Website: www.asseteng.com.au

STATUTORY INSPECTION REPORT

EWP-BOOM TYPE

Owner's Plant No:	1600CU002	Inspection Date:	13/08/2019	Job No:	6077
Serial No:	251A	Owner:	Metals X		
Manufacturer:	Normet	Site:	Nifty		
Manufacture Date:	01/01/2010	Location:	Workshop		
Model:	NBB3S	Site Contact:	Louise Johnston		
Design Reg No:	WAH19590	Individual Reg No:	NA		
Description:	Elevating Work Platform - Boom Type	Group/Type:	B & 2/3 (AS 1418.10:2011)		
MRC:	0.3t	Max Lift Height:	TBA		

Inspector's Name:	Michael Dodd	Inspector's Signature:	
Report QA Checked By:	Fang Wang	Report QA Signature:	
Next Inspection due:	13/08/2020	(AS2550.10:2006)	
Next Statutory Inspection due on or before:	13/08/2021	(MSIR 1995 - Regulation 6.40, Schedule 3)	

I have inspected this Elevating Work Platform in accordance with Regulation 6.40(1) of the Mines Safety and Inspection Regulations 1995 and sections of AS 1418.1:2002, AS 1418.10:2011, AS 2550.1:2011 and AS 2550.10:2006 and assessed that it is suitable for continued operation. The following Non-Compliance(s) need to be rectified:-

Non-Compliance(s):

1. The gate is to be made self closing and return to the closed and fastened position. Refer AS1418.10:2011, cls 2.5.6 and 6.2.2.

Recommendation(s):

Nil.

Inspection Note(s):

2. Check with Normet as to when their Major Critical Component overhaul is to be completed AS2550.5:2016 Section:7.3.1

15.

EQUIPMENT DATA	C	DNC	NA/NI	COMMENTS
Unique Identity Number	✓			
Registration Number	✓			
Evidence of Registration	✓			
Operators / Maintenance Manuals	✓			
MANUFACTURER'S DATA LABEL	C	DNC	NA/NI	COMMENTS
Manufacturer's Details	✓			
Model	✓			
Serial Number	✓			
Year of Manufacture	✓			
Rated Capacity	✓			
Max Allowable Manual Force	✓			
Max Allowable Wind Speed	✓			
Max Chassis Inclination	✓			
Insulation Rating (if applicable)			NA	
Compliance Statement to AS1418	✓			
EQUIPMENT HISTORY / MAINTENANCE	C	DNC	NA/NI	COMMENTS
Past Inspection Reports	✓			
Test Certificates	✓			
Logbook Available and Being Used	✓			
Routine Maintenance	✓			
Annual Maintenance	✓			
Major Inspections (10 yr.)	✓			Due 2020
Prior Damage / Repairs	✓			
BOOM / CHASSIS	C	DNC	NA/NI	COMMENTS
Chassis	✓			
Boom Sections	✓			
Welds	✓			
Bolted Connections	✓			
Platform Connection	✓			
Boom Locking Pins	✓			
Lift Mechanism / Bolts / Locking Pin	✓			
Boom Safety Prop (if Applicable)	✓			
Transport Supports / Cradle			NA	
Wire Rope / Chain / Cable			NA	
Lubrication	✓			
Tyres	✓			
Tyre Pressure Decal (Pneumatic Tyres)	✓			
Tyre Weight Decal (Foam Filled Tyres)			NA	
Maximum Point Load Decals	✓			
Guards (Engine, Hazardous Areas)	✓			
Battery (Secure, Ventilation)	✓			
Fuel Tank and Decal	✓			
Lights / Indicators	✓			
HYDRAULICS	C	DNC	NA/NI	COMMENTS
Secure and Free of Damage / Leaks	✓			
Load Holding Valves	✓			

Tank Fluid Level Indicator	✓			
STABILITY	C	DNC	NA/NI	COMMENTS
Inclination Indicator (eg. Audible Alarm. Type 1 may only have Spirit Level)	✓			
Stabilizers	✓			
Feet Accommodate 10° Unevenness	✓			
Decal Stating Stabilizers Must Be Used	✓			
Secure In Transport Position	✓			
Interlock to Prevent Platform Movement Outside Permitted Positions Until Stabilizers In Place	✓			
Interlock to Prevent Stabilizer Movement If Work Platform Is Not Stowed or Outside Permitted Range	✓			
WORK PLATFORM	C	DNC	NA/NI	COMMENTS
Handrails (> 950mm high)	✓			
Intermediate Rails (< 550mm from Top Rail and Toe Board)	✓			
Toe Board (> 100mm high)	✓			
Vertical Rails (< 180mm gap)	✓			
Grab Rail (Recommended)	✓			
Guard Above Controls (> 50mm)	✓			
Floor (Min dimension < 15mm)	✓			
Gates (Self closing / latching)		X		Not self locking / closing
Anchorage points	✓			
Crush Zone Guards / Protection			NA	
WORK PLATFORM - DECAL CONDITION	C	DNC	NA/NI	COMMENTS
Rated Capacity (kg)	✓			
Rated Capacity (no. people + kg)	✓			
Max Manual Force (N)	✓			
Max Wind Speed	✓			
Insulated or Non-Insulated			NA	
Insulation Rating (if applicable)			NA	
Safe Approach Distance Powerlines	✓			
Anchor Points (no. of people)	✓			
CONTROLS	C	DNC	NA/NI	COMMENTS
Labels	✓			
Free of Damage	✓			
Hold to Run	✓			
Protected from Unintentional Activation	✓			
Safe Location for Operator	✓			
Located Away From Exhaust	✓			
Operators Have A Visual of Corresponding Movement	✓			
Only Selected Control Station is Active	✓			
Ground Controls Can Override Platform	✓			
Emergency Stops	✓			
No Unauthorized Use (ie. Key Start)	✓			
Horn in Platform (Type 3 only)	✓			

Asset Management Engineers

Means of Communication With Driver	✓			
EMERGENCY LOWERING	C	DNC	NA/NI	COMMENTS
Controls and Instructions	✓			
Overrides Platform E-Stop	✓			
Functional Test	✓			
TRAVEL / MOVEMENT	C	DNC	NA/NI	COMMENTS
Interlock fitted (Pedestrian Controlled and Type 1 EWPs) to prevent travel while work platform is out of stowed position.	✓			
Max Travel Speed 1.7m/s (Pedestrian Controlled EWPs) 1.5m/s (Type 3 Vehicle Mounted) 3.0m/s (Type 3 Rail Mounted) 0.7m/s (All Other Type 3).	✓			
Max Slew Speed 1.4m/s (Horizontal Speed at Outer Edge of Platform At Max Range)	✓			
Max Platform Raise / Lower Speed 0.8m/s	✓			
Max Telescoping Speed 0.8m/s	✓			
Brakes (Travel Movement)	✓			
Brakes (All Drives)	✓			
Smoothness and Limits of Motion	✓			
Platform Automatic Levelling (< 5° variation)	✓			
OTHER	C	DNC	NA/NI	COMMENTS
Ancillary Equipment			NA	
Additional Items Specified By Manufacturer			NA	

C: Complies

DNC: Does Not Comply

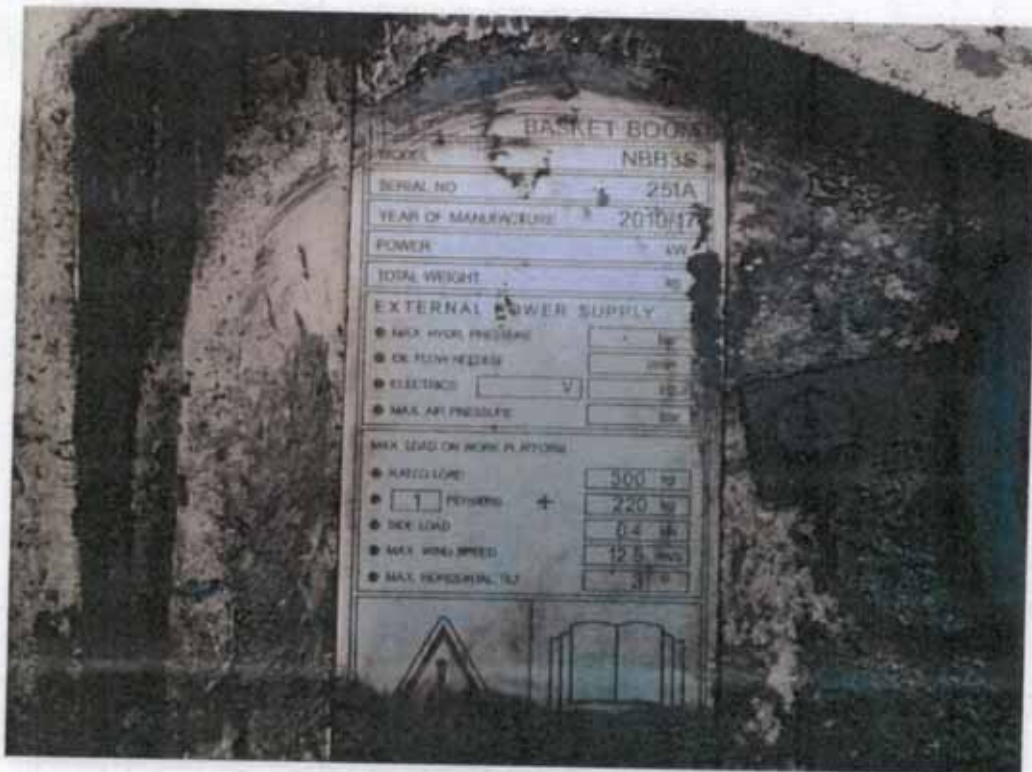
NA: Not Applicable

NI: Not Inspected

EQUIPMENT DATA



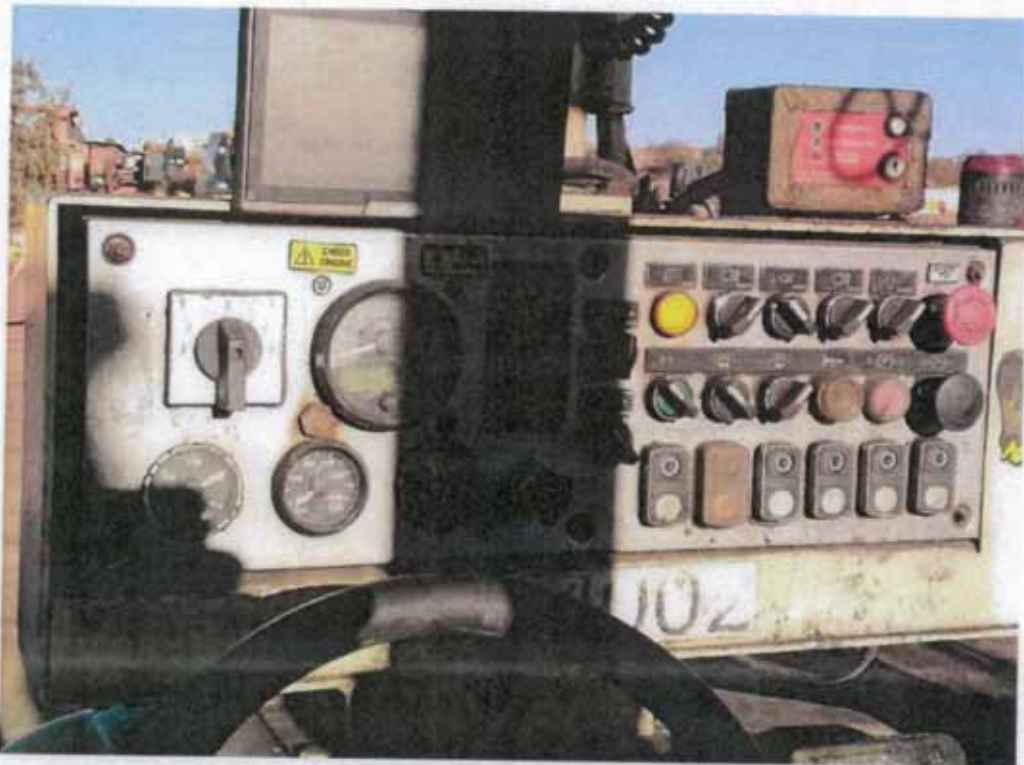
EQUIPMENT DATA



EQUIPMENT DATA



EQUIPMENT DATA



EQUIPMENT DATA



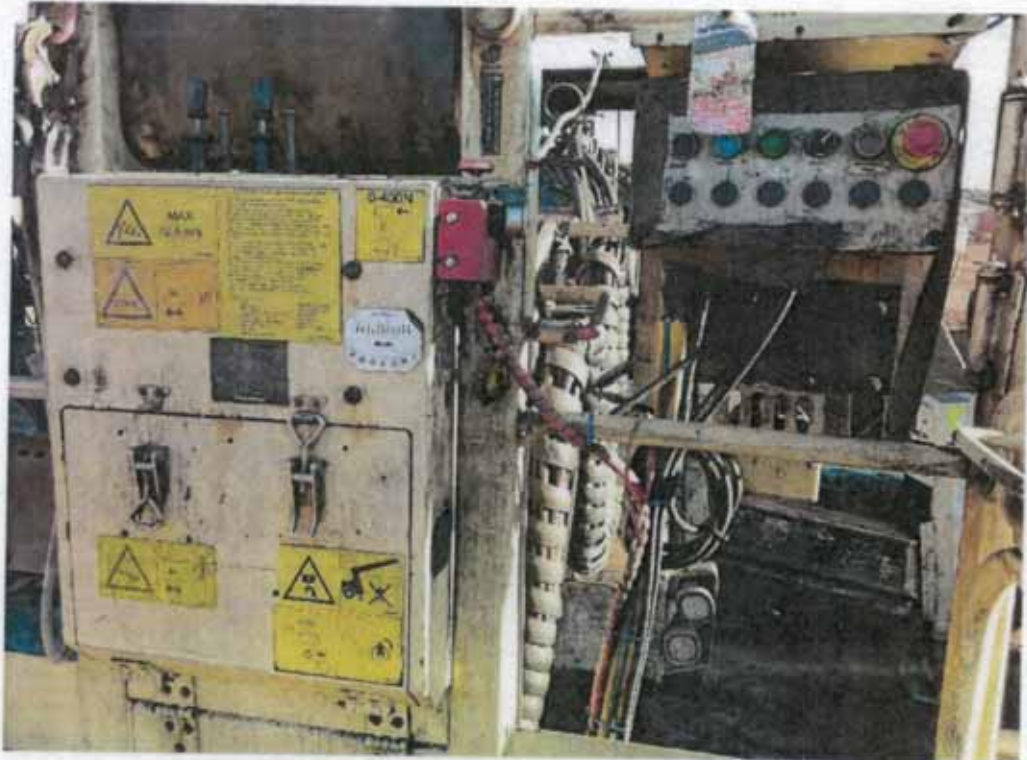
EQUIPMENT DATA



EQUIPMENT DATA



EQUIPMENT DATA



EQUIPMENT DATA



EQUIPMENT DATA



EQUIPMENT DATA



EQUIPMENT DATA



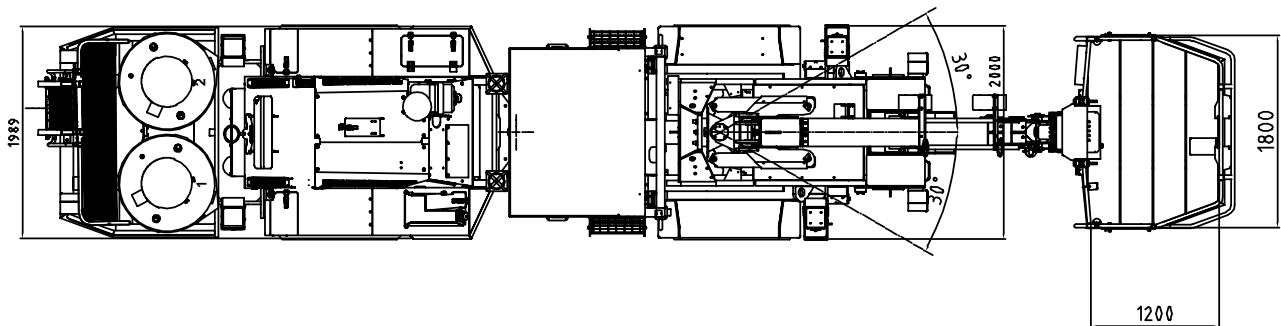
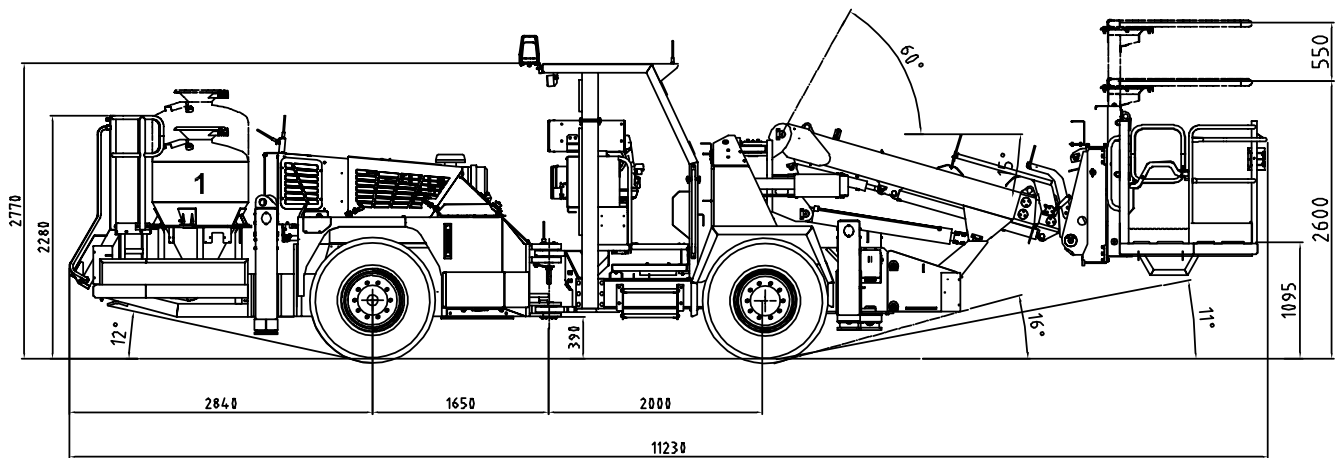
normet

Normet Corporation
Ahmolantie 6
FI-74510 IISALMI, FINLAND
Tel +358 (0) 17 83 241
Fax +358 (0) 17 823 606

Charmec 1610 B

ANFO Loader with boom

TI 100005408
DRW
DATE 04.09.2008
PAGE 1 / 3
APPR. 04.09.2008



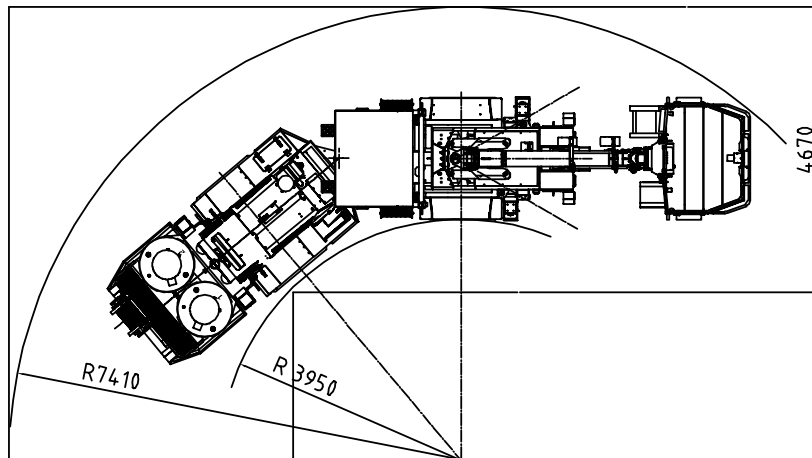
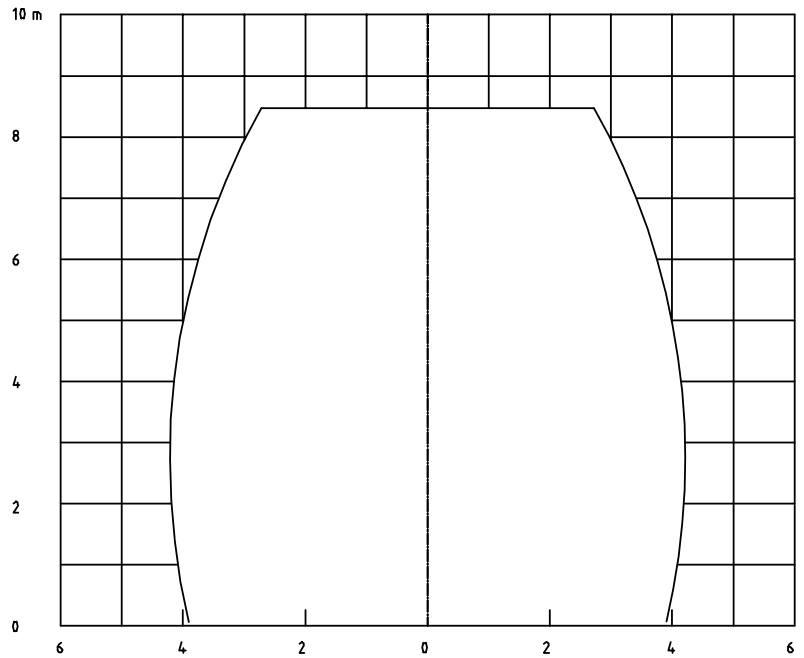
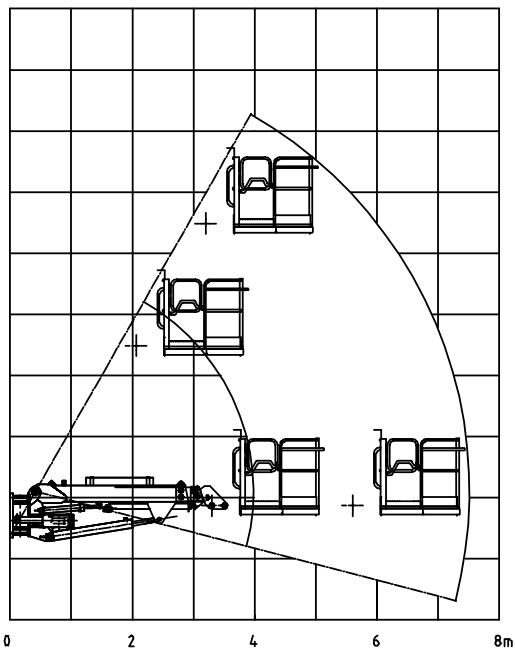
normet

Normet Corporation
Ahmolantie 6
FI-74510 IISALMI, FINLAND
Tel +358 (0) 17 83 241
Fax +358 (0) 17 823 606

Charmec 1610 B

ANFO Loader with boom

TI 100005408
DRW
DATE 04.09.2008
PAGE 2 / 3
APPR. 04.09.2008



DIMENSIONS

Length	11230 mm
Width	2400 mm
Height	2770 mm
Wheel base	3650 mm
Track	1650 mm
Ground clearance	390 mm

WEIGHT

Operating	13800 kg
-----------	----------

TURNING RADIUS

Outer	7410 mm
Inner	3900 mm

NBB3S BASKET BOOM

Lifting capacity	500 kg
Lifting height	6400 mm
Boom slew	+/- 30°
Vertical working reach	7450 mm
Horizontal working reach	8450 mm
Hydraulic support legs	
Diesel start/stop from basket	
Battery operated emergency pump	

ANFO SYSTEM

Tank volume	2x500 l
Pressure	max. 8 bar
Remote controls in basket	

PERFORMANCE CURVE

1st gear	max. 5 km/h
2nd gear	10 km/h
3rd gear	25 km/h
Max. tractive effort	132 kN

TRANSMISSION

Dana Spicer powershift
 3 speeds forwards and reverse
 4-wheel drive

AXLES

Planetary type	
rear axle fixed	
front axle oscillation	+/- 10°

TYRES

12.00 - 20 PR 18

BRAKES

Service brake: hydraulically powered two-circuit oil immersed multidisc brakes in both axles

Safety/Parking brake: hydraulically released fail-safe - type brake

STEERING

Hydraulic frame steering,
 Orbitrol type
 Frame articulation +/- 40°

HYDRAULICS

175 bar, 137 l/min/2200 rpm

ENGINE

Deutz TCD 2013 L4
 120 kW/2300 rpm

ELECTRICAL SYSTEM

24 V negative ground
 Battery 2 x 110 Ah
 Alternator 80 A
 Lights (2+2) x 70 W

OPTIONS AND ACCESSORIES:**ENGINE**

Mercedes- Benz 904 LA
 110 kW/2200 rpm

SAFETY CANOPY FOR BASKET

Lifting capacity with safety canopy 400 kg

ANFO SYSTEM 2x720 L