

**2011 Atlas Copco L7 Blast Hole Drill Rig**



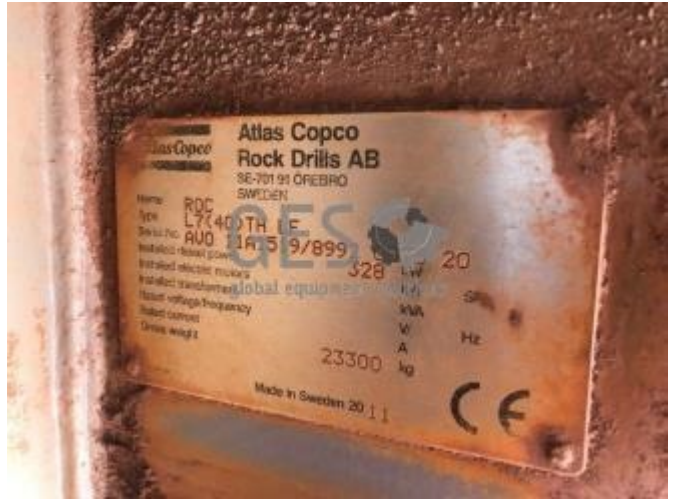
<b>Make</b>	Atlas Copco		<b>Model</b>	L7 (40) TH LF		
<b>Year</b>	2011	<b>Hours</b>	16541		As at	28/02/2019
<b>Mileage</b>				km	As at	
<b>Serial/VIN</b>	AVO11A1519, 8892007520			<b>Engine Serial</b>	RRA11273	
<b>Details</b>	<p>2011 Atlas Copco L7 Blast Hole Drill Rig 2011 Atlas Copco L7 (40) TH LF Blast Hole Drill Rig fitted with 2016 Caterpillar C13 engine and 2007 COP4050ME Drifter rock drill. This drill rig has 16,541 frame hours while Engine has only 4,296 hours since last changed. Recently returned from work this rig may require minor clean up prior to going back to work with cracked side window as per photos. For maintenance history &amp; last drifter rebuild report please see detailed GES equipment report. This asset is offered for sale via Online Auction on an "As Is Where Is" basis ex Hazelmere, Western Australia.</p>					
<b>Asking price</b>	AUD	Under review - call for pricing				
<b>Ex site</b>	Australia, Western Australia, Hazelmere					

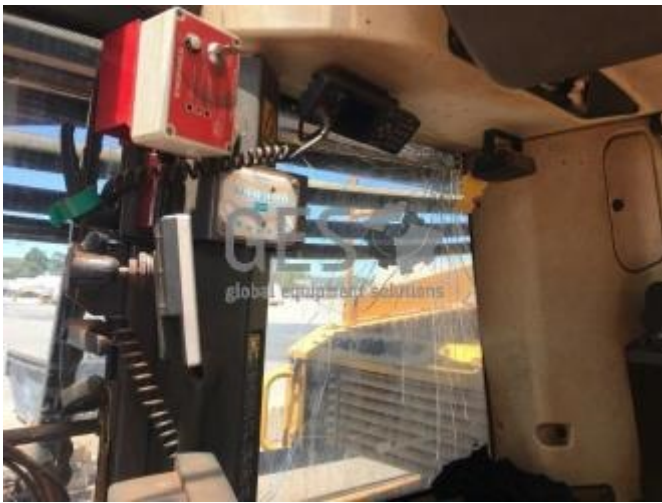
**Service history**

This drill rig has 16,541 frame hours while Engine, Turbo, Fuel Pump, Injectors, Main Water Pump & Radiator have 4,296 hours since last changed at 12,245 hours. Cracked side window as per photos and will need a new set of clip on's and the rod handler will likely need attention as is normal for the L7 and some general oil leaks that did not get done prior to leaving site. Drill is fitted with fitted with 2007 COP4050ME Drifter rock drill as per attached rebuild report from 2014.

**For further details, to make an offer or book an inspection, contact  
Global Equipment Solutions on Office: 08 9201 1142**













Unit Number	Equipment Description	Service Type	Service Type Description	% Due	Component Hours	Last Completed Date	Last Completed Hours	Completed Frame Hours
DR067	Atlas Copco Drill ROC L7	H-000	Inspection - Air Receiver	105	4,022	12/07/2017	12,519	16,541
DR067	Atlas Copco Drill ROC L7	H-036	Insp - Pressure Relief Valve	40	2,905	15/10/2017	13,636	16,541
DR067	Atlas Copco Drill ROC L7	H-110	Engine	28	4,296	13/06/2017	12,245	16,541
DR067	Atlas Copco Drill ROC L7	H-110MT	Engine - Mounts	137		10/02/2013		16,541
DR067	Atlas Copco Drill ROC L7	H-110V	Engine - Valve Adjustment	28	4,296	10/02/2013	12,245	16,541
DR067	Atlas Copco Drill ROC L7	H-114	Turbo	28	4,296	02/10/2014	12,245	16,541
DR067	Atlas Copco Drill ROC L7	H-115	Pump - Fuel	28	4,296	10/02/2013	12,245	16,541
DR067	Atlas Copco Drill ROC L7	H-116	Injectors	28	4,296	10/02/2013	12,245	16,541
DR067	Atlas Copco Drill ROC L7	H-120	Pump - Water - Main	28	4,296	10/02/2013	12,245	16,541
DR067	Atlas Copco Drill ROC L7	H-122	Radiator	28	4,296	13/06/2017	12,245	16,541
DR067	Atlas Copco Drill ROC L7	H-231LHR	Final Drive - LH Rear	137		10/02/2013		16,541
DR067	Atlas Copco Drill ROC L7	H-231RHR	Final Drive - RH Rear	137		10/02/2013		16,541
DR067	Atlas Copco Drill ROC L7	H-234	Coupling - PTO	137		10/02/2013		16,541
DR067	Atlas Copco Drill ROC L7	H-335LH	Track - LH	103		14/07/2017		16,541
DR067	Atlas Copco Drill ROC L7	H-335RH	Track - RH	103		14/07/2017		16,541
DR067	Atlas Copco Drill ROC L7	H-344LH	Sprocket Segment - LH	103		10/02/2013		16,541
DR067	Atlas Copco Drill ROC L7	H-344RH	Sprocket Segment - RH	103		10/02/2013		16,541
DR067	Atlas Copco Drill ROC L7	H-345LH	Track Idler - P1	103		10/02/2013		16,541
DR067	Atlas Copco Drill ROC L7	H-345RH	Track Idler - P2	103		10/02/2013		16,541
DR067	Atlas Copco Drill ROC L7	H-346	Track Rollers	103		10/02/2013		16,541
DR067	Atlas Copco Drill ROC L7	H-446	Operators Seat	165		10/02/2013		16,541
DR067	Atlas Copco Drill ROC L7	H-450	Fire Supression	72	1,281	24/03/2018	15,260	16,541
DR067	Atlas Copco Drill ROC L7	H-451	Meter Reader - C/O			31/07/2017	12,990	
DR067	Atlas Copco Drill ROC L7	H-541	Pump - Main Hydraulic	165		10/02/2013		16,541
DR067	Atlas Copco Drill ROC L7	H-541RT	Pump Hyd Rotation	275		10/02/2013		16,541
DR067	Atlas Copco Drill ROC L7	H-542	Pump - Pump 1	141	8,492	02/10/2014	8,049	16,541
DR067	Atlas Copco Drill ROC L7	H-544	Pump - Pump 3	275		10/02/2013		16,541
DR067	Atlas Copco Drill ROC L7	H-547C	Motor - Hyd Cooling- Fan Assy	275		10/02/2013		16,541
DR067	Atlas Copco Drill ROC L7	H-547D	Motor Dust Collector	275		10/02/2013		16,541
DR067	Atlas Copco Drill ROC L7	H-547F	Motor Feed	110		10/02/2013		16,541
DR067	Atlas Copco Drill ROC L7	H-547LR	Motor Rotation - LH	275		10/02/2013		16,541
DR067	Atlas Copco Drill ROC L7	H-547RR	Motor Rotation - RH	275		10/02/2013		16,541
DR067	Atlas Copco Drill ROC L7	H-549LH	Travel Motor - LH	137		10/02/2013		16,541
DR067	Atlas Copco Drill ROC L7	H-549RH	Travel Motor - RH	137		10/02/2013		16,541
DR067	Atlas Copco Drill ROC L7	H-550	Hydraulic Lines	167	10,026	24/06/2014	6,515	16,541
DR067	Atlas Copco Drill ROC L7	H-553	Cylinder - Boom Lift	137	13,777	18/09/2013	2,764	16,541
DR067	Atlas Copco Drill ROC L7	H-568	Boom Swing Cylinder	137		10/02/2013		16,541
DR067	Atlas Copco Drill ROC L7	H-569LH	Oscil'n Cyl - LH	165		10/02/2013		16,541
DR067	Atlas Copco Drill ROC L7	H-569RH	Oscil'n Cyl -RH	165		10/02/2013		16,541
DR067	Atlas Copco Drill ROC L7	H-570	Pump Hyd P4	275		10/02/2013		16,541
DR067	Atlas Copco Drill ROC L7	H-577LH	Centralising Cylinder - LH	413		10/02/2013		16,541
DR067	Atlas Copco Drill ROC L7	H-577RH	Centralising Cylinder - RH	413		10/02/2013		16,541
DR067	Atlas Copco Drill ROC L7	H-578	Feed Swing Cylinder	275		10/02/2013		16,541
DR067	Atlas Copco Drill ROC L7	H-579	Guide Extension Cylinder	275		10/02/2013		16,541
DR067	Atlas Copco Drill ROC L7	H-580	Feed Extension Cylinder	275		10/02/2013		16,541
DR067	Atlas Copco Drill ROC L7	H-581	Feed Dump Cylinder	275		10/02/2013		16,541
DR067	Atlas Copco Drill ROC L7	H-584LH	Cylinder - Breakout - Upper	155	15,500	14/05/2013	1,041	16,541
DR067	Atlas Copco Drill ROC L7	H-584RH	Cylinder - Breakout - Lower	75	7,530	12/01/2014	9,011	16,541
DR067	Atlas Copco Drill ROC L7	H-586	Levelling Cylinder			05/08/2018	16,541	
DR067	Atlas Copco Drill ROC L7	H-766	Frame	137		10/02/2013		16,541
DR067	Atlas Copco Drill ROC L7	H-767L	Drifter Liner		11,577	05/03/2014	4,964	16,541
DR067	Atlas Copco Drill ROC L7	H-771	Compressor	137		10/02/2013		16,541
DR067	Atlas Copco Drill ROC L7	H-771C	Air Compressor Coupling	75	7,509	28/12/2014	9,032	16,541
DR067	Atlas Copco Drill ROC L7	H-771H	Air End High Pressure	206		10/02/2013		16,541
DR067	Atlas Copco Drill ROC L7	H-771L	Air End Low Pressure	206		10/02/2013		16,541
DR067	Atlas Copco Drill ROC L7	H-771M	Compressor Mounts	137		10/02/2013		16,541
DR067	Atlas Copco Drill ROC L7	H-774FB	Feed Beam	137		10/02/2013		16,541
DR067	Atlas Copco Drill ROC L7	H-775	Comp Oil Cooler	165		10/02/2013		16,541
DR067	Atlas Copco Drill ROC L7	H-777	Breakout Table	137		10/02/2013		16,541
DR067	Atlas Copco Drill ROC L7	H-789	Return/Feed Ropes	42	3,364	19/08/2017	13,177	16,541



DR067	Atlas Copco Drill ROC L7	H-789R	Rope - Return	206		10/02/2013		16,541
DR067	Atlas Copco Drill ROC L7	H-797	Drum/Pull Down Ropes	165		10/02/2013		16,541
DR067	Atlas Copco Drill ROC L7	H-801	Scheduled Major Service	95	239	19/06/2018	16,302	16,541