



NIFTY COPPER PTY LTD

STRIP AND QUOTE HLX5T ROCKDRILL-

Sandvik Mining and Rock Technology Pty Ltd Australia

Customer: NIFTY COPPER PTY LTD Date: 02/04/2019 Job number: 7389399

Your STRIP AND QUOTE HLX5T ROCKDRILL: **HLX5T KIT**, S/No **T048237** arrived in Kalgoorlie rebuild centre on the 20/03/2019 with 992 hours.

The following parts were missing from the STRIP AND QUOTE HLX5T ROCKDRILL when it arrived;

Strip down Inspection:

The rockdrill was sent in for "achieving its hours". Upon dismantling the rockdrill, only general wear and tear of components was found.

Machining required:

Flushing head.

Reassemble Comments:

Endurance kit and Flushing head kit.

Fixed Service Charge	\$ 1,932.00
Cost of recommended replacement parts	\$ 8,639.95
Cost of recommended machining repairs:	\$ 234.60

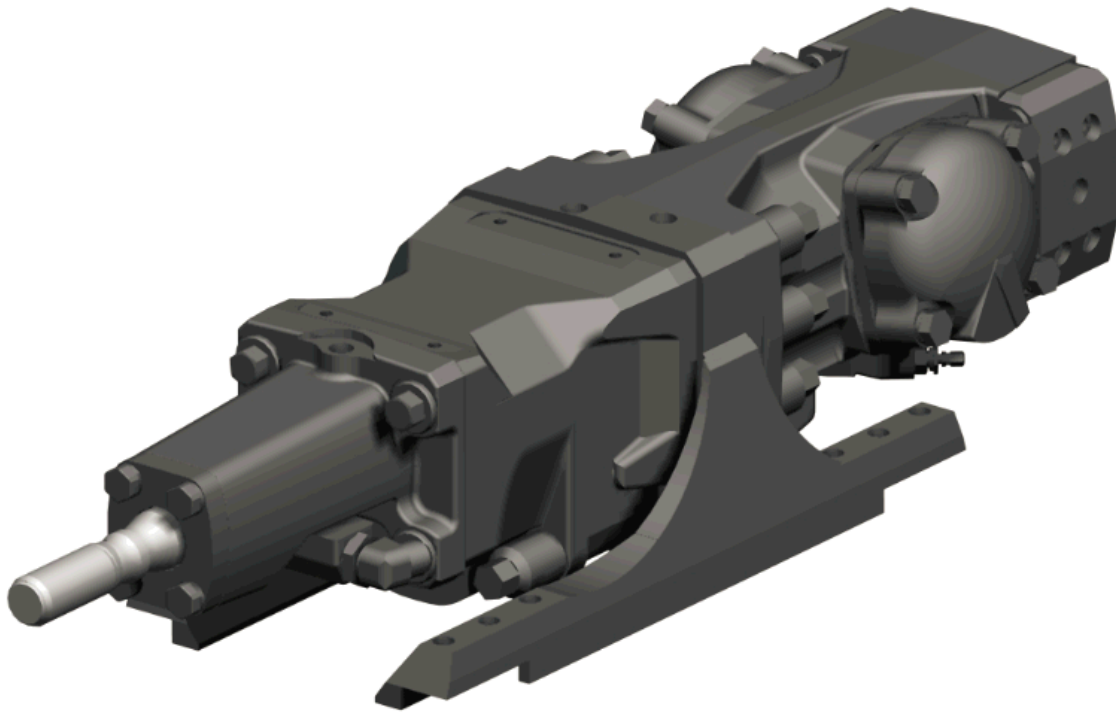
Total cost of service and recommendations: \$ 10,806.55

The attached report details the condition of your STRIP AND QUOTE HLX5T ROCKDRILL using the Sandvik Standard Reporting documentation used in our Sandvik repair facility. All images shown in this report will detail components requiring attention.

If you have any queries regarding this report, please contact

Name: Ben Rothen
Phone: 0437 436 106
Email: ben.rothen@sandvik.com

Equipment



Condition on arrival

Comment

Last rebuilt by

Picture 1



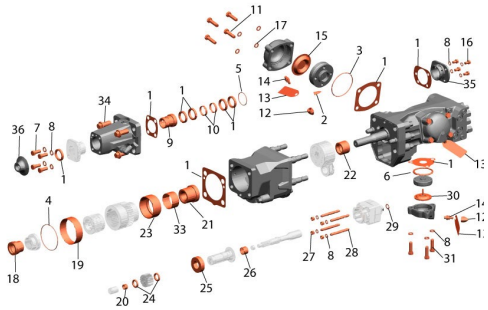
Picture 2



ENDURANCE KIT

Drawing

Parts 1 - Service Item 2 - Missing 3 - Worn beyond limits	Failure Code Index 4 - Damaged 5 - Misalignment 6 - Non OEM Parts 7 - Lack of Lubrication	8 - Contamination 9 - Scored 10 - Refer to Comments
---	--	---



Ref.	Part Description	Qty	Failure code	Comment
*	ENDURANCE KIT	1	1	

PERCUSSION KIT

Drawing

Parts

Failure Code Index

1 - Service Item

2 - Missing

3 - Worn beyond limits

4 - Damaged

5 - Misalignment

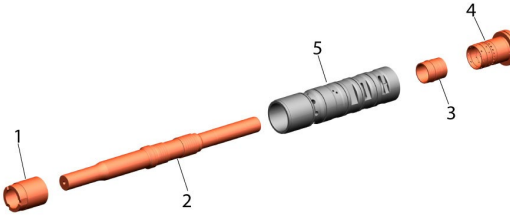
6 - Non OEM Parts

7 - Lack of Lubrication

8 - Contamination

9 - Scored

10 - Refer to Comments



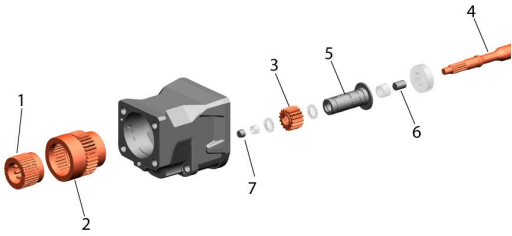
The percussion components are in fair condition and will reuse again.

ROTATION KIT WF

Drawing

Parts	Failure Code Index	4 - Damaged	8 - Contamination
	1 - Service Item	5 - Misalignment	9 - Scored
	2 - Missing	6 - Non OEM Parts	10 - Refer to Comments
	3 - Worn beyond limits	7 - Lack of Lubrication	

Ref.	Part Description	Qty	Failure code	Comment
1	COUPLING - INC ROTATION KIT	1	3	The coupling outer splines are worn past service limit.
5	HOUSING, BEARING	1	3	The bearing housing is worn where the thrust washer contact.



1 The coupling outer splines are worn past service limit.



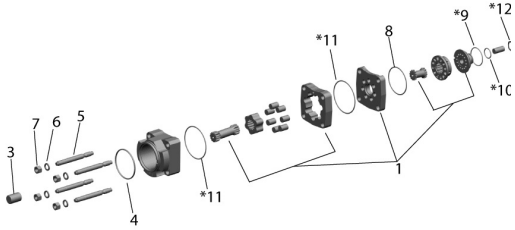
5 The bearing housing is worn where the thrust washer contact.



ROTATION MOTOR

Drawing

<p>Parts</p> <p>1 - Service Item 2 - Missing 3 - Worn beyond limits</p>	<p>Failure Code Index</p> <p>4 - Damaged 5 - Misalignment 6 - Non OEM Parts 7 - Lack of Lubrication</p>	<p>8 - Contamination 9 - Scored 10 - Refer to Comments</p>
---	--	--

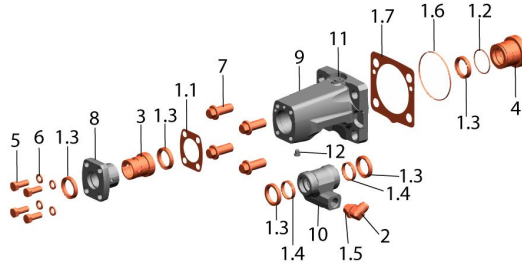


80cc motor fitted. The motor internals are in fair condition and will reuse.

FLUSHING KIT D45

Drawing

Parts	Failure Code Index	4 - Damaged	8 - Contamination
	1 - Service Item	5 - Misalignment	9 - Scored
	2 - Missing	6 - Non OEM Parts	10 - Refer to Comments
	3 - Worn beyond limits	7 - Lack of Lubrication	



Ref.	Part Description	Qty	Failure code	Comment
*	FLUSHING HEAD REBUILD KIT - INCLUDES BG0800869	1	1	
3	BUSHING, BEARING	0	3	The front cover bush is worn.
4	BUSHING, SHANK	0	3	The rear shank bush striker face is pitted and starting to crack.

3 The front cover bush is worn.



- 4 The rear shank bush striker face is pitted and starting to crack.



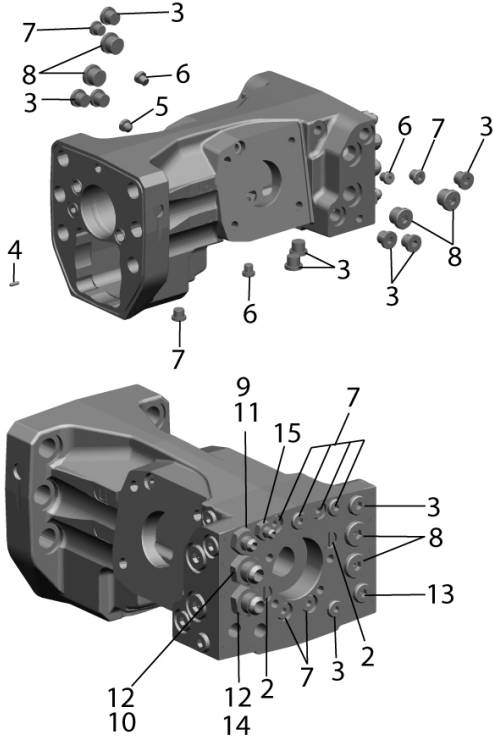
The flushing head requires repairs (build and machine) to the worn seal carrier land to extend its service life. Worn from general wear and tear that is relative to the achieved hours.



FRAME ASSEMBLY

Drawing

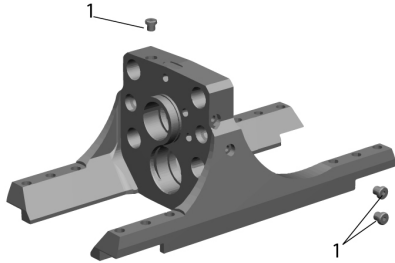
Parts	Failure Code Index	4 - Damaged	8 - Contamination
	1 - Service Item	5 - Misalignment	9 - Scored
	2 - Missing	6 - Non OEM Parts	10 - Refer to Comments
	3 - Worn beyond limits	7 - Lack of Lubrication	



Ref.	Part Description	Qty	Failure code	Comment
2	PLUG	2	1	
3	PLUG	11	1	
7	PLUG	9	1	
8	PLUG	6	1	
9	STRAIGHT THREAD ADAPTER	3	1	
10	STRAIGHT THREAD ADAPTER	1	1	
11	PLUG	3	1	
12	PLUG	2	1	
14	ORIFICE ADAPTER	1	1	

SPACER

Drawing



<p>Parts</p> <p>1 - Service Item</p> <p>2 - Missing</p> <p>3 - Worn beyond limits</p>	<p>Failure Code Index</p> <p>4 - Damaged</p> <p>5 - Misalignment</p> <p>6 - Non OEM Parts</p> <p>7 - Lack of Lubrication</p>	<p>8 - Contamination</p> <p>9 - Scored</p> <p>10 - Refer to Comments</p>
---	---	--

Ref.	Part Description	Qty	Failure code	Comment
1	PLUG	3	1	