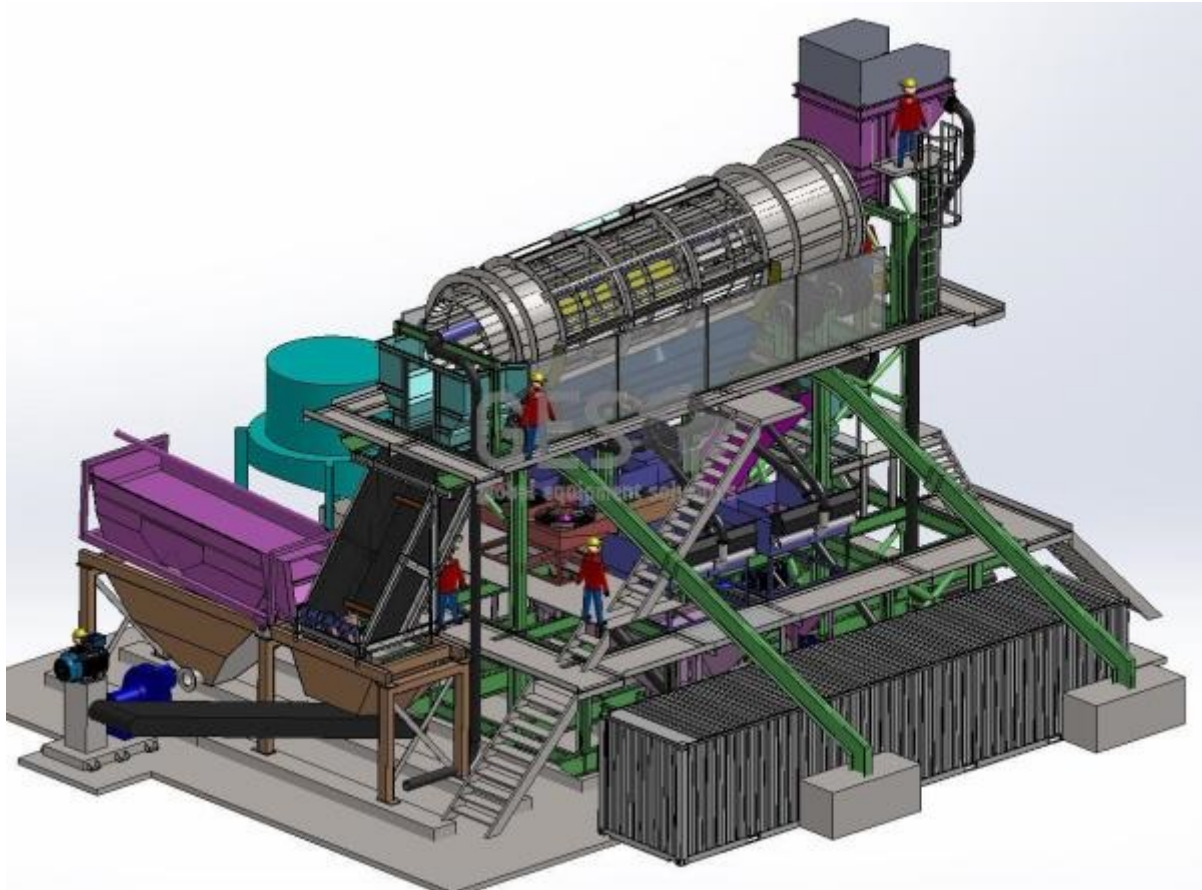


Alluvial Gold Processing Plant Partially Completed



Make	Custom		Model	Alluvial Gold Processing Plant Incomplete	
Year	2012	Hours		As at	
Mileage			km	As at	
Serial/VIN			Engine Serial		
Details	<p>Alluvial Gold Processing Plant Partially Completed Gravity processing plant with a designed capacity of 750 m³ / hour, ~10 million tonnes per annum.</p> <p>This plant was being built from new & refurbished components on a new built bespoke structure when the project was cancelled and was not fully completed and has been kept in an indoor storage shed.</p> <p>The design is modular in nature to facilitate movement in hi cube shipping containers and onsite assembly with limited resources.</p> <p>Package includes:</p> <p>Trommel incomplete 10m x 3m dia bisalloy 80 construction with Bisalloy 400 wear package on leading edges & discharge ports, weight 18 tonnes with a spare drive motor and reduction box new & unused. Trommel barrel base complete with 6 sets of 1100mm diameter pneumatic tyres using 180mm 4140 high tensile shafting and SN series double row roller bearings. Unit comes complete with 37kW electric drive and Bonfiglioli bevel</p>				

helical torque arm mount gearbox and spare motor & gearbox, spare drive couplings and coupling drive elements. Unit also comes with hydraulic barrel lift mechanism and hydraulic power pack. Trommel underflow pans in bisalloy 400 wear grade steel, sparge, barrel ramp structure, safety screens, splash guarding, trommel discharge chute, trommel feed bin constructed of bisalloy 400 wear grade steel complete with primary slurry density control point & feed bin access ladder.

Primary Jigs - 4 x Pan American 4 cell 42" jigs plant items M10, M11, M12 & M13 fully refurbished jigs including new 3mm stainless steel wedge wire screens, new water pressure control valves and automatic lube system ready for permalube cartridges. 2 x Pan American 1 cell 48" jigs plant items M15, M16 fully refurbished with radial tails discharge including new 3mm stainless steel wedge wire screens, new water pressure control valves and automatic lube system ready for permalube cartridges.

Secondary Jig - 1 x Pan American 2 cell 42" jig plant item M17 fully refurbished jig including new 3mm stainless steel wedge wire screens, new water pressure control valves and automatic lube system ready for permalube cartridges.

Tertiary Jigs - 2 x Pan American 1 cell 24" jigs M22 & M23 fully refurbished including new 3mm stainless steel wedge wire screens, new water pressure control valves and automatic lube system ready for permalube cartridges.

All jigs repaired from weather damage never used and now in "As New" condition.

Jig tailings sump structure, tailings pump 1 x 10/8 AH Warman pump on base with direct coupled CMG 132 KW 415 volt drive & 8/5 AH Warman pump on base with no drive motor.

Vibrating dewatering 2 deck screen 1.8 x 6 mtr refurbished exciter shaft & bearings with new motor & belt drive, stripped tub & ready for appropriate screen fitment.

Hydraulic power pack and 2 x 40 ft Containerised refurbished MCC (ex Storage Tasmania).

Plant base frame package consisting of 2 x Main plant frame sections 12 x 2.3 mtr x 2.3 mtr each, bolt in midsection structures, welded mild steel sumps / surge bins and associated pipework and spigots.

Bolt on walkways, deck sections, access stairs, handrails and cross member supports.

Jigs and bins set up with lockable mesh covers for site security.

Offered as one package on an "As Is Where Is" basis with all costs for collection and loading to be arranged by the purchaser.

Plant items available from indoor storage shed Burleigh Heads Qld and the MCC's x 2 are available from outdoor storage ex Tasmania.

Please note: Buyers must ensure they confirm the item is fit for their intended use prior to bidding.

This item is being sold via online auction as per the link below to the auction sale page.
Bidding closes 8th November.

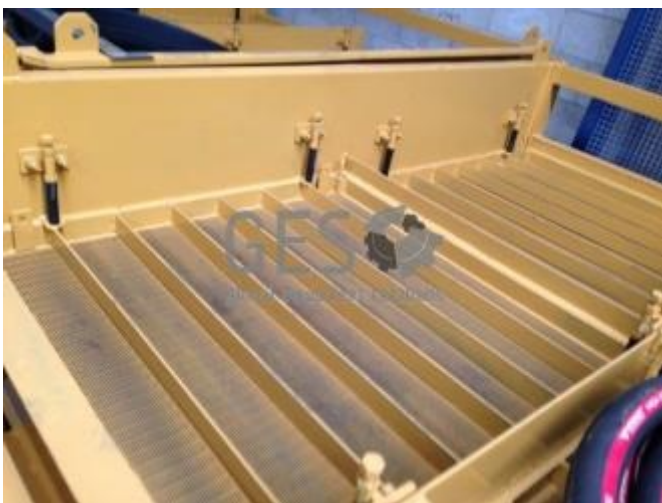
Asking price	AUD Under review - call for pricing
Ex site	Australia, Queensland, Burleigh Heads

Service history	Package includes: Modular processing plant: Fully designed while only partially complete with: Trommel barrel (excluding wear liners) 10m x 3m with base, drive, feed bin, underflow pans, water sparge line, safety screens, access ladder and platform Trommel
------------------------	---

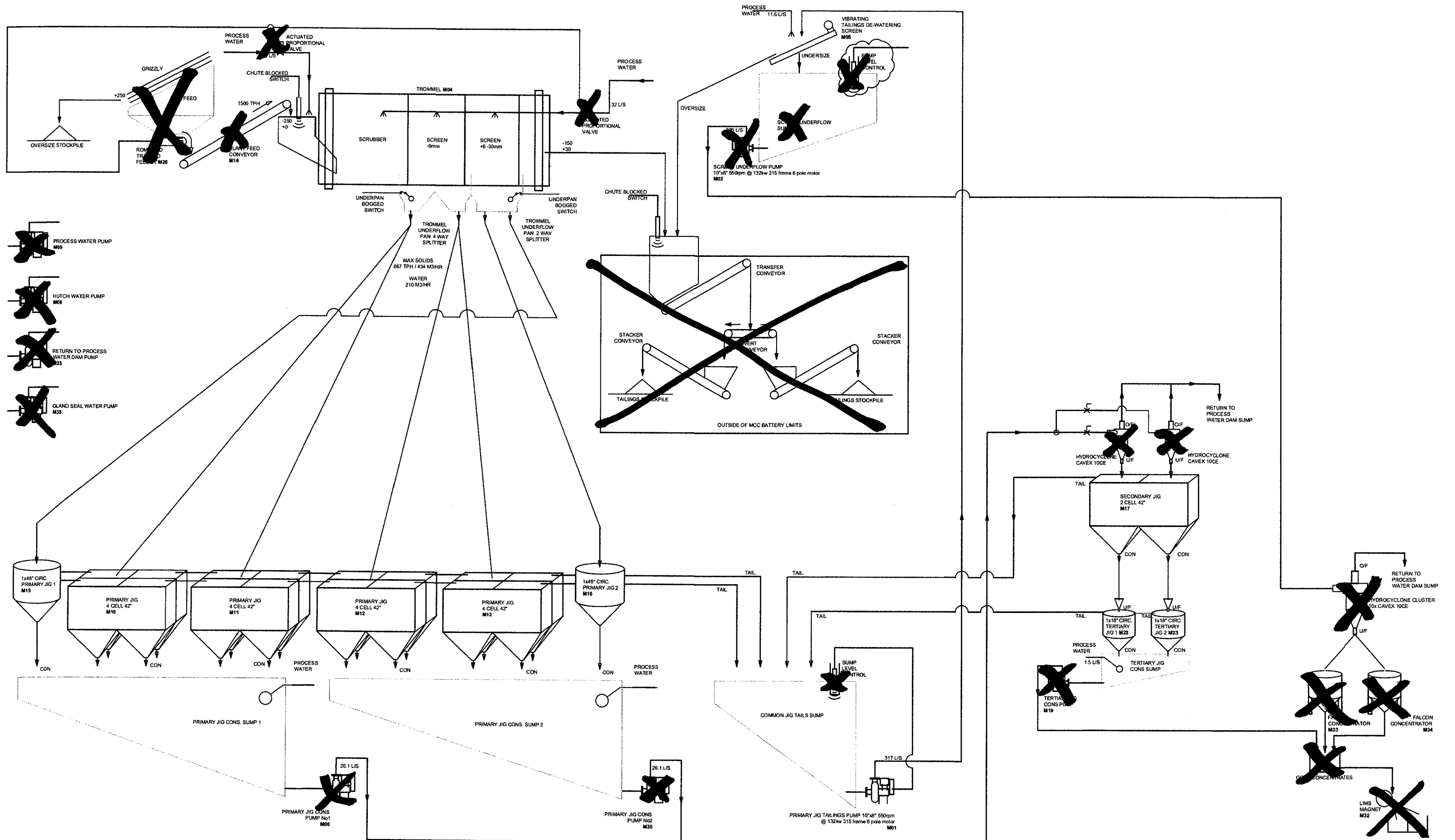
**For further details, to make an offer or book an inspection, contact
Global Equipment Solutions on Office: 08 9201 1142**











ALL DIMENSIONS IN MILLIMETRES

TOLERANCES EXCEPT WHERE OTHERWISE STATED ON DIMENSIONS

FABRICATION	MACHINING
NO. DECIMAL PLACE	1. DECIMAL PLACE
± 2	± 0.2
± 0.5	± 0.1
± 0.25	± 0.05
± 0.125	± 0.025

MASS (kg):-	NO DECIMAL PLACE: ± 1.0	✓ R3.2
MATERIAL:-	ONE DECIMAL PLACE: ± 0.5	✓ R12.5
	TWO DECIMAL PLACES: ± 0.25	
	HOLE TRUE POSITION WITHIN 0.25	
	HOLE Ø: -0 +0.2	

COPYRIGHT © RESERVED

The design as detailed on this drawing is confidential and is the property of HOWCAM Technologies Pty Ltd and/or its Associates and must be returned on demand. It is issued on the strict condition that except with our written permission it must not be reproduced, copied or communicated to any third party, nor be used for any purpose other than that stated in the particular enquiry, order or contract with which it is issued. The reservation of copyright in this document extends from each date appearing thereon and in respect of the subject matter as it appeared at the relevant date.

HOWCAM TECHNOLOGIES
 15 WINTON TCE ROBINA QLD 4227 AUSTRALIA
 HOWCAM Technologies Pty Ltd
 201 119 227 000

PROJECT:

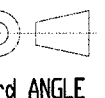
SCALE:

1:1

DO NOT SCALE

TITLE:

PRELIMINARY PFD - 1000TPH



3rd ANGLE

CLIENT:

DRAWN:

LTH

22-6-2011

DESIGNED:

DRAWING No.

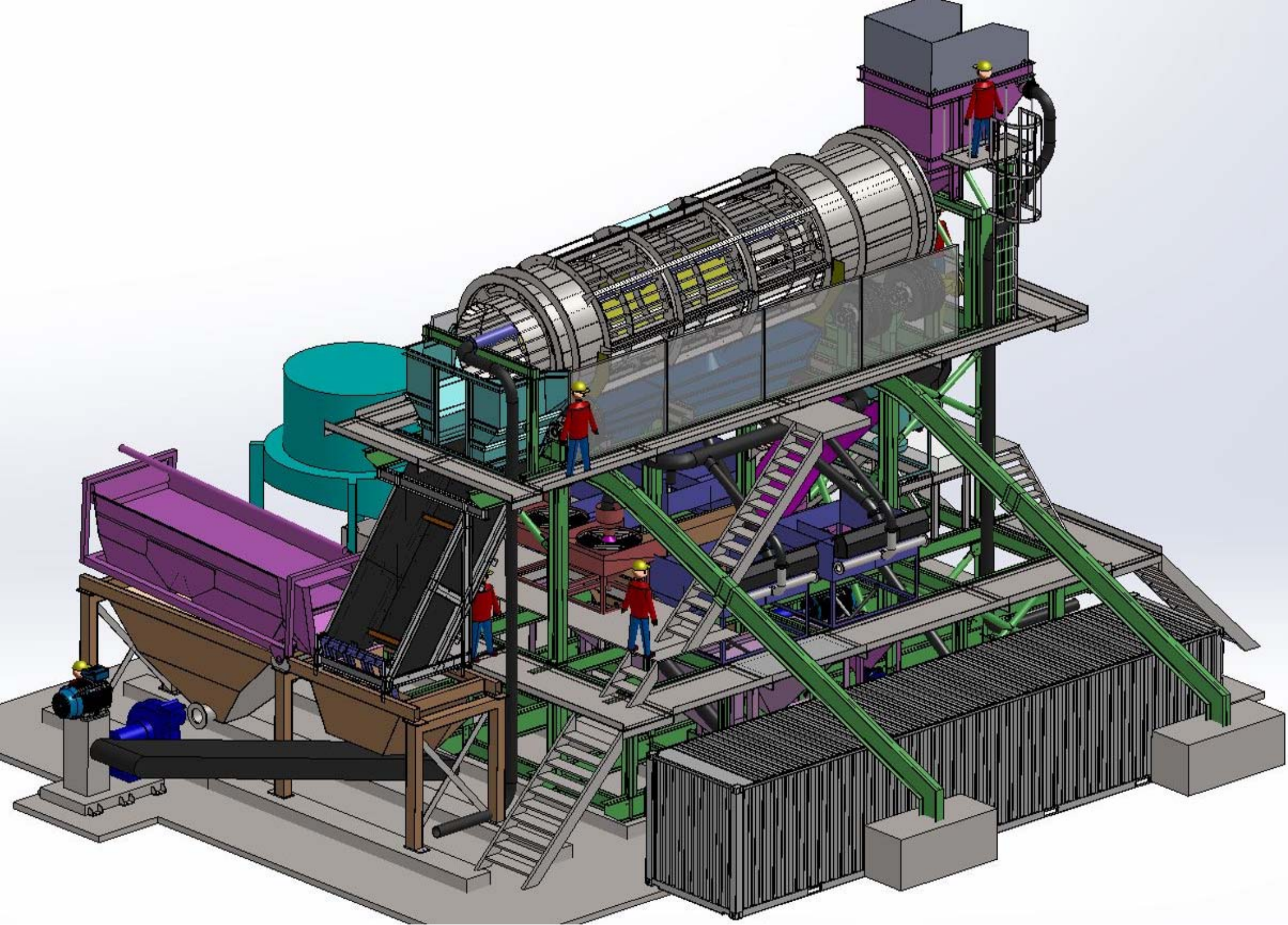
CHECKED:

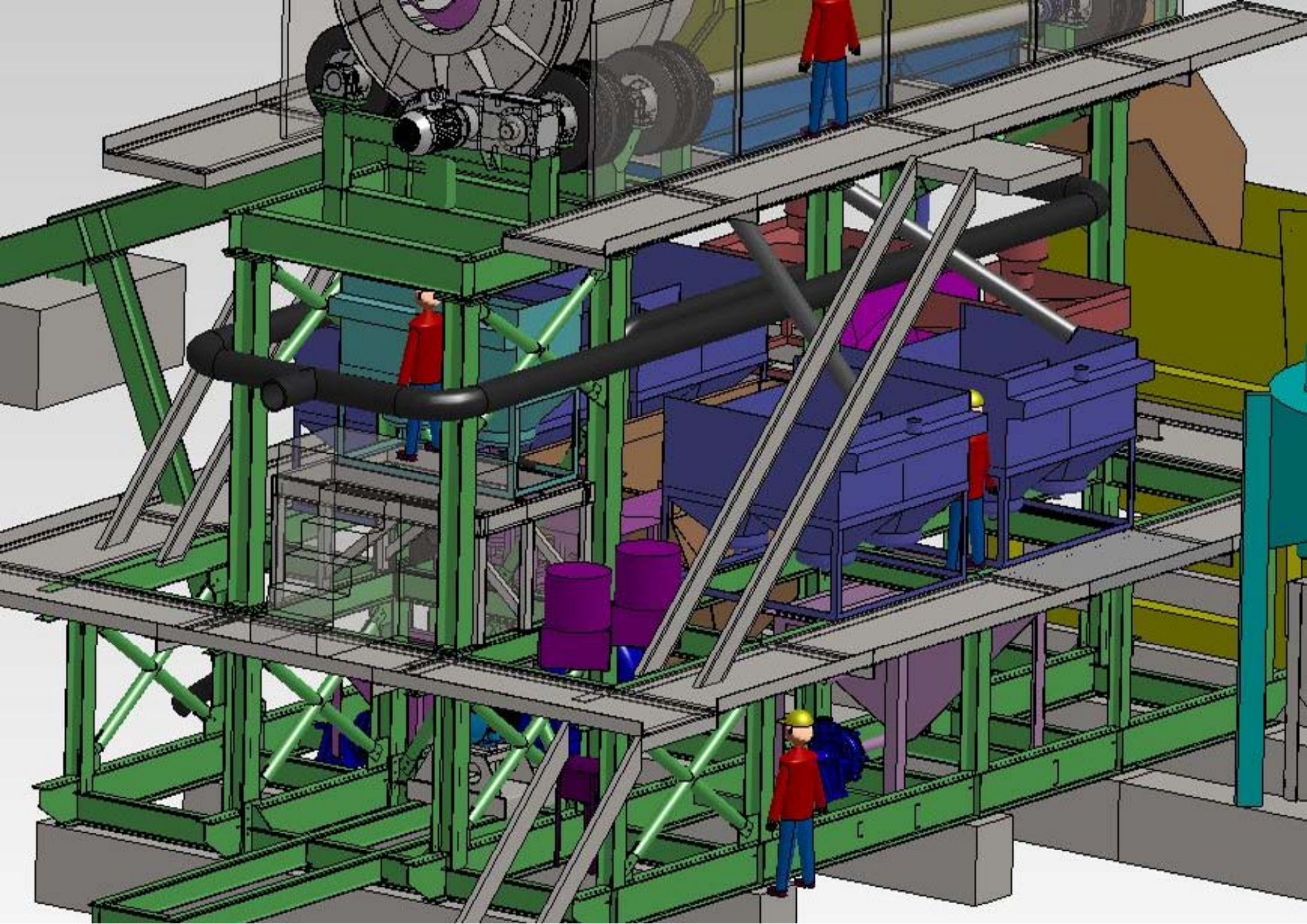
APPROVED:

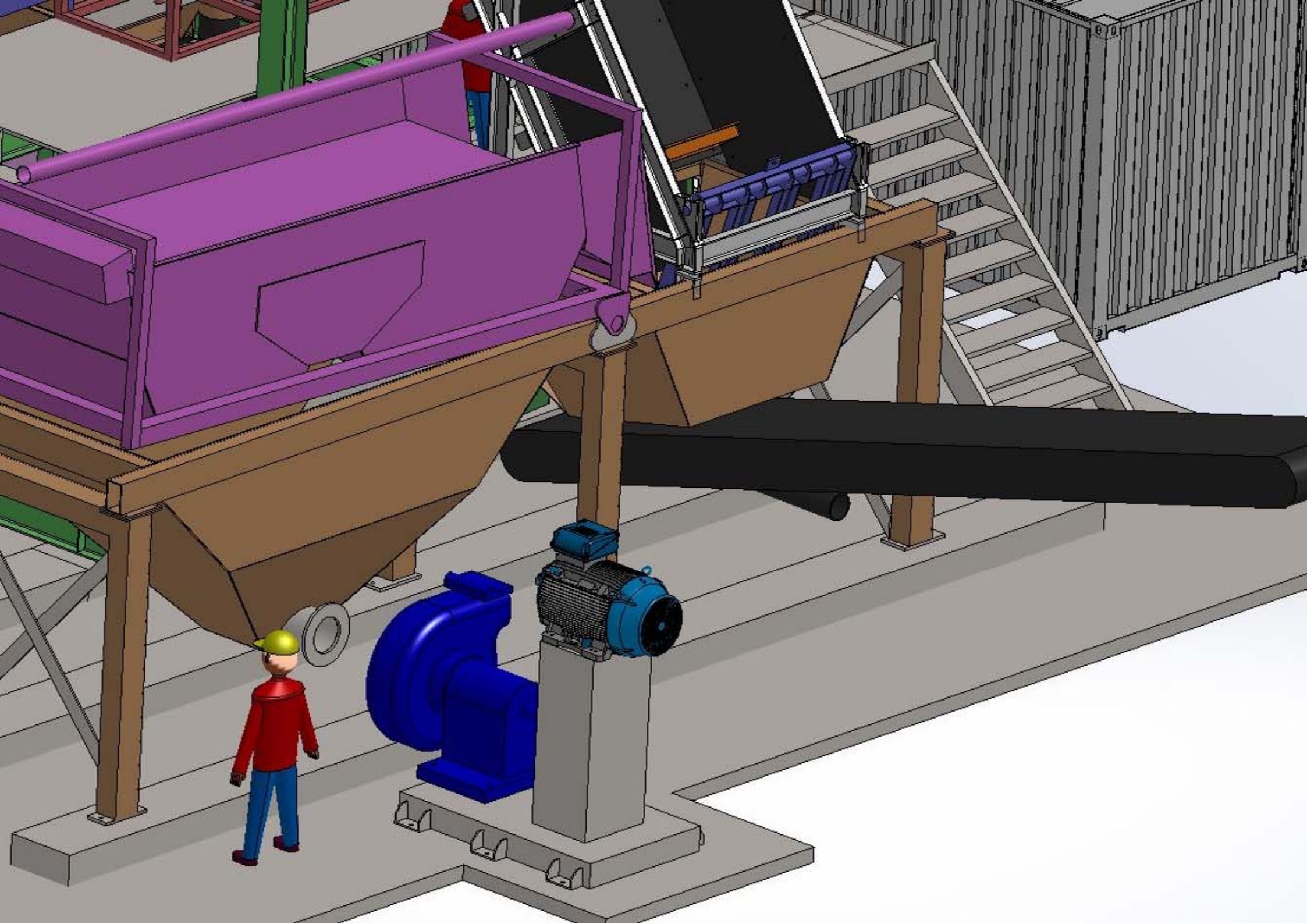
REV:

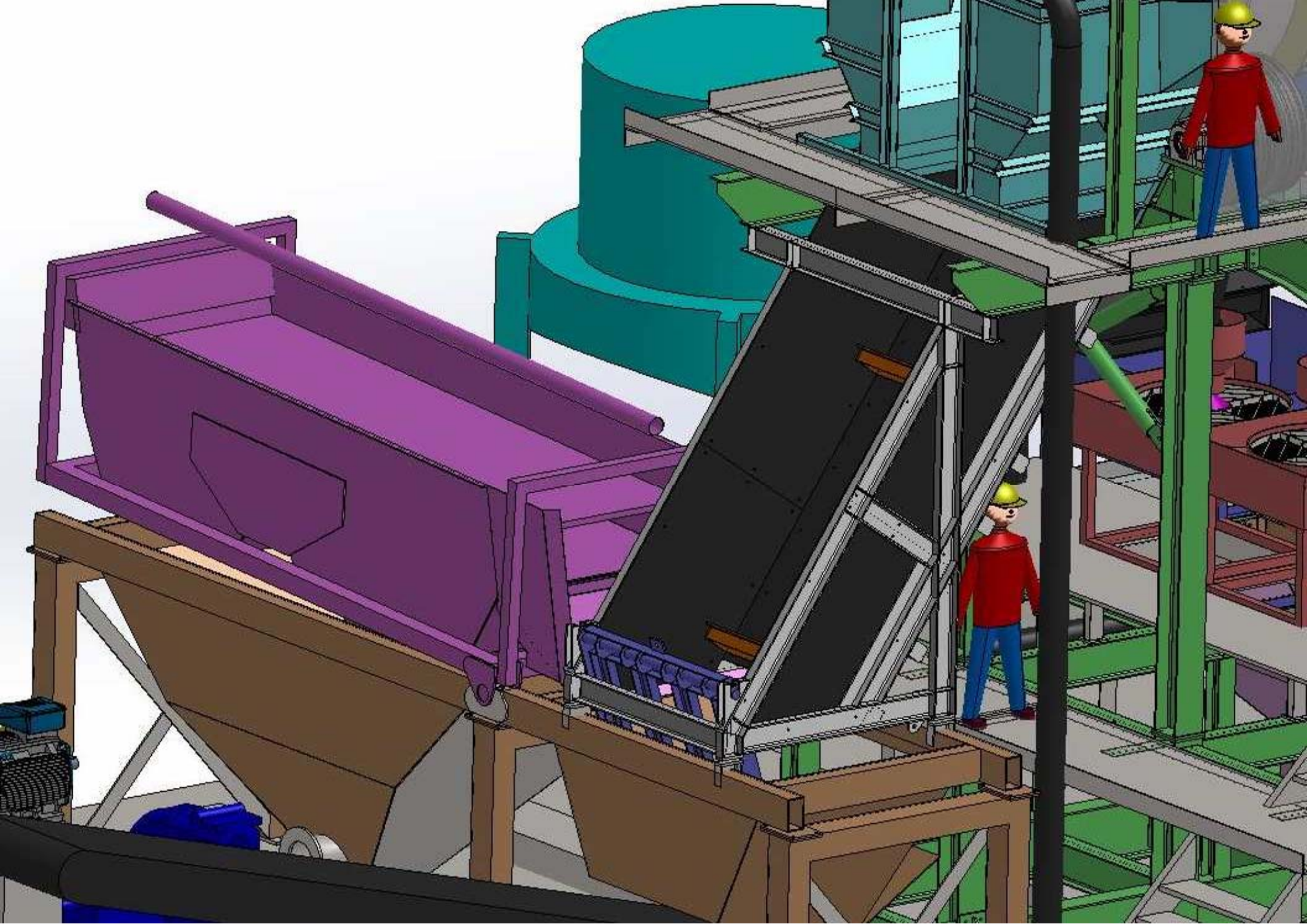
A3

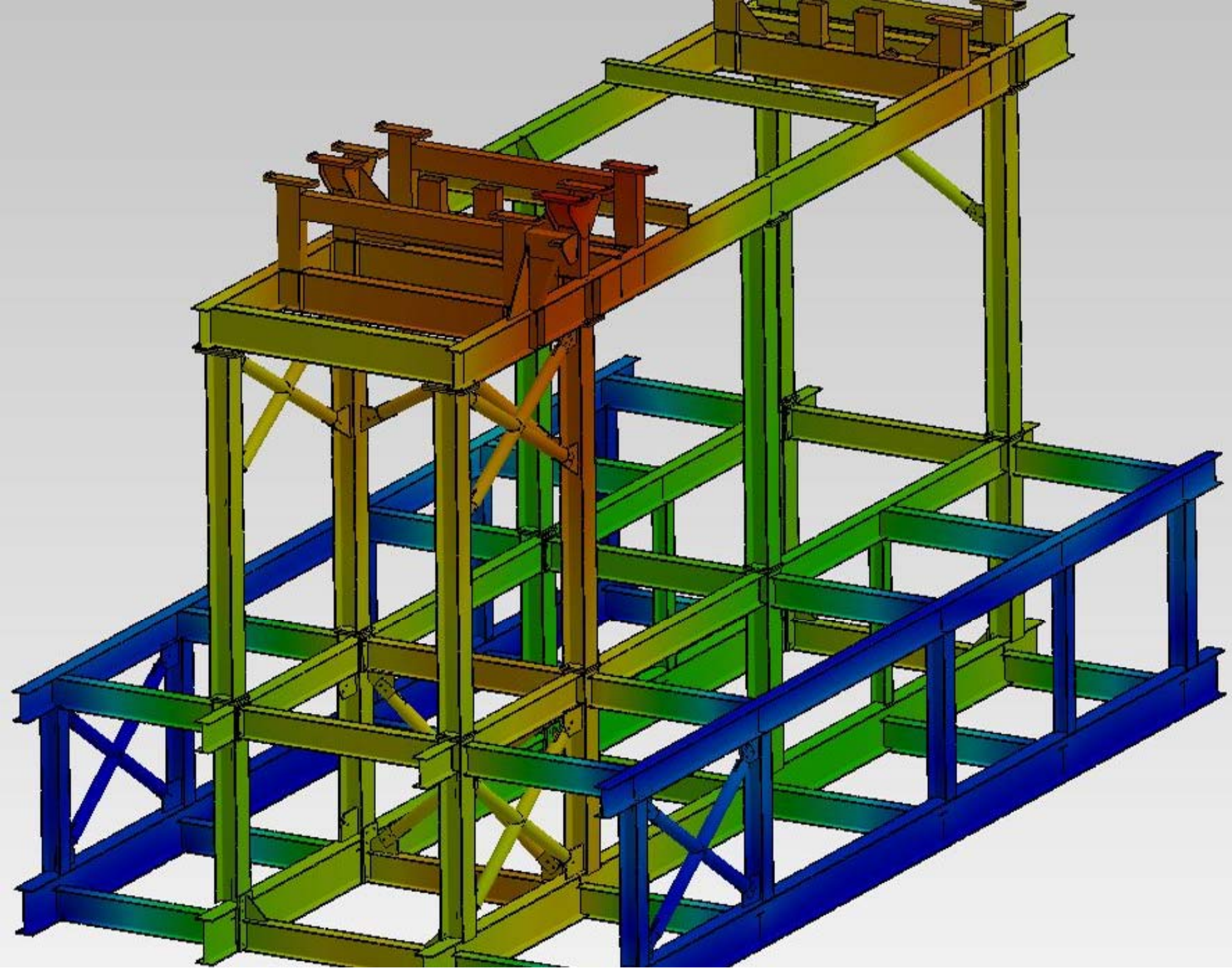
REV	DESCRIPTION	NAME	DATE	CHECKED

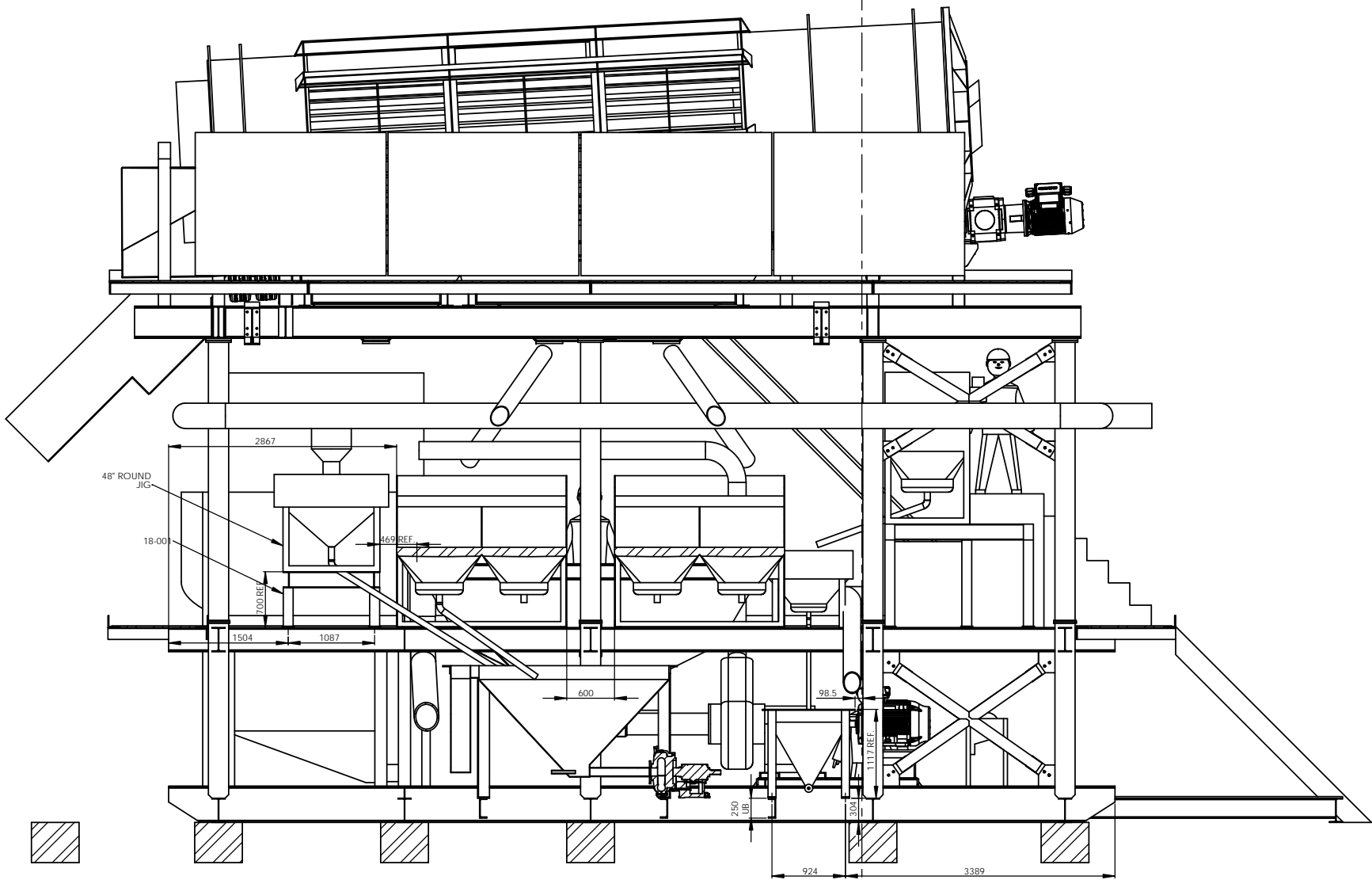












REVISION	GRID	DESCRIPTION	NAME	DATE	CHECKED

COPYRIGHT © RESERVED

The design as detailed on this drawing is confidential and is the property of HOWCAM Technologies Pty Ltd and/or its Associates and must be returned on demand. It is issued under license that except with our written permission, this design be reproduced, copied or communicated to any third party, not be used for any purpose other than that stated in the particular enquiry, order or contract with which it is issued. The reservation of copyright in this document extends from each date appearing thereon and in respect of the subject matter as it appeared at the relevant date.

ALL DIMENSIONS IN MILLIMETRES

TOLERANCES EXCEPT WHERE OTHERWISE STATED ON DIMENSIONS

NO DECIMAL PLACE: ±1.0
 ONE DECIMAL PLACE: ±0.5
 TWO DECIMAL PLACES: ±0.25
 HOLE TRUE POSITION WITHIN HOLE Ø: -0 +0.2
 ANGLE: ±1.0°

FABRICATION NO DECIMAL PLACE #2	MACHINING TOLERANCE PLACE #2
✓ 0.2	✓ 0.2
✓ 0.2	✓ 0.2
✓ 0.2	✓ 0.2
✓ 0.2	✓ 0.2
✓ 0.2	✓ 0.2
✓ 0.2	✓ 0.2
✓ 0.2	✓ 0.2
✓ 0.2	✓ 0.2
✓ 0.2	✓ 0.2

HOWCAM TECHNOLOGIES

15 WINTON TCE ROBINA QLD 4227 AUSTRALIA
 HOWCAM Technologies Pty Ltd
 ACN 149 827 465

CLIENT: _____

MATERIAL: _____

CHECKED: _____ DRAWN: _____

APPROVED: _____ APPROVED: _____

ENG: _____

DO NOT SCALE

DRG. No. **01-000**

REV. _____

Scale: **1:100**

3rd ANGLE