

**2007 Komatsu WA900-3E0 PWL128**



<b>Make</b>	Komatsu		<b>Model</b>	WA900-3E0		
<b>Year</b>	2007	<b>Hours</b>	54577		As at	16/04/2018
<b>Mileage</b>				km	As at	
<b>Serial/VIN</b>	KMTWA101J26060012			<b>Engine Serial</b>		
<b>Details</b>	2007 Komatsu WA900-3E0 PWL128. This asset is offered for sale via Online Auction on an "As Is Where Is" basis running to drive on to buyers transport ex Bibra Lake, Western Australia.					
<b>Asking price</b>	AUD	Under review - call for pricing				
<b>Ex site</b>	Australia, Western Australia, Bibra Lake					

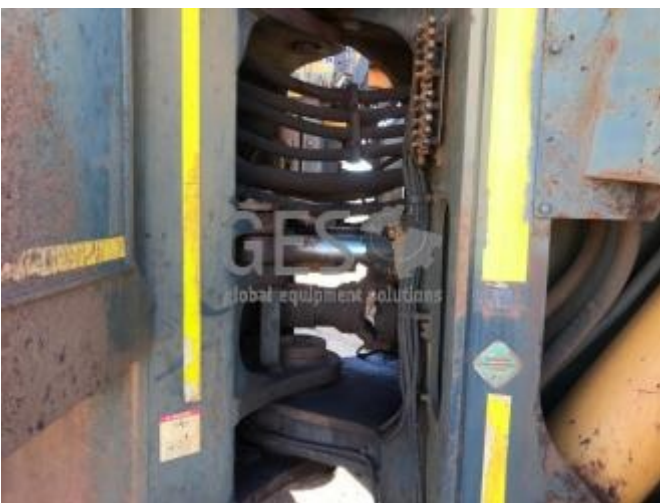
<b>Service history</b>	
------------------------	--

**For further details, to make an offer or book an inspection, contact  
Global Equipment Solutions on Office: 08 9201 1142**











# Equipment Profile

2007 Komatsu WA900-3E0 Wheel Loader

## Equipment Summary

TK817 PWL128

**Serial No** KMTWA101J26060012  
**Location** Koolyanobbing  
**SMU** 54577 hrs  
**Last Service** 16/04/2018

## Maintenance History

Code	Description	Hours
------	-------------	-------

Asset ID **PWL128**

Code	Description	Sum of Hours
H-110	Engine	18,956
H-110D	Engine - Damper	12,853
H-114LH	Turbo - LH	4,055
H-114RH	Turbo - RH	12,437
H-116	Injectors	5,906
H-120	Pump - Water - Main	10,031
H-122	Radiator	18,956
H-221	Transmission	7,361
H-224B	Drive Shaft Centre Bearing	8,298
H-226	Pump - Transmission	7,361
H-226C	Cooler - Transmission	7,361
H-229	Differential - Rear	7,361
H-229F	Differential - Front	23,614
H-231LHF	Final Drive - LH Front	32,327
H-231LHR	Final Drive - LH Rear	32,327
H-231RHF	Final Drive - RH Front	32,327
H-231RHR	Final Drive - RH Rear	32,327
H-332	Cooler - Brake/TC/Trans	14,085
H-333LHF	Brake - LHF	32,327
H-333LHR	Brake - LHR	32,327
H-333RHF	Brake - RHF	21,586
H-333RHR	Brake - RHR	32,327
H-342	Trunnion	7,361
H-429	Orbital Steering Valve	19,640
H-440	Articulation Pins & Bushes	35,780
H-446	Operators Seat	6,168
H-448	Valve - Steering Demanc	3,646
H-452	Cab Mounts	54,246
H-539	Pump - Hyd Switch	12,853
H-540	Pump - Steering	12,853
H-541	Pump - Main Hydraulic	16,224
H-550R	Hydraulic Re-Hose	7,361
H-552	Cooler - Hydraulic Oil	7,361
H-552TC	Cooler - Tropical	14,085
H-554	Cylinder - Bucket	18,101
H-557LH	Cylinder - Lift - LH	15,783
H-557RH	Cylinder - Lift - RH	13,315
H-559LH	Cylinder - Steering - LH	18,956
H-559RH	Cylinder - Steering - RH	15,783
H-593A	Valve - Hydraulic Control - 1	5,057
H-593B	Valve - Hydraulic Control - 2	5,057
H-766	Frame	54,246
H-801	Scheduled Major Service	709