

**Caterpillar AD55B Underground Water Cart TW008, WTK311**



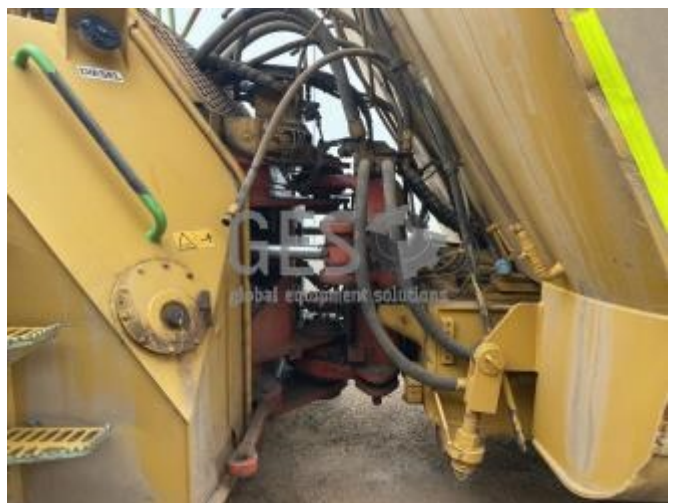
<b>Make</b>	Caterpillar		<b>Model</b>	AD55B Water Cart		
<b>Year</b>		<b>Hours</b>	27889	As at	04/10/2021	
<b>Mileage</b>				km	As at	
<b>Serial/VIN</b>	JNW00107			<b>Engine Serial</b>		
<b>Details</b>	<p>Caterpillar AD55B Water Cart Asset TW008, WTK311.  AD55B Maintenance data indicates the engine may need new injectors.  See more component hours details in the GES Equipment report on the auction page for this asset.  Offered for sale via online auction in "As Is" condition, running to drive on to buyers transport ex site Pinjarra, WA. Australia.</p>					
<b>Asking price</b>	AUD	Under review - call for pricing				
<b>Ex site</b>	Australia, Western Australia, Pinjarra					
<b>Service history</b>	See the component hours data at the end of this report.					

**For further details, to make an offer or book an inspection, contact**

**Global Equipment Solutions on Office: 08 9201 1142**











## TW008 COMPONENTS

Machine Type	Last Changed	Component Hours	Hours remaining until change out	Lifespan										Next Change	Change out Interval
AD55B															
Serial #															
JNW00107															
Frame Hours															
27889	10%	20%	30%	40%	50%	60%	70%	80%	90%	100%					
ENGINE	17985	9904	2096											29985	12000
TRANSMISSION	20174	7715	2285											30174	10000
FRONT DIFF	18972	8917	11083											38972	20000
REAR DIFF	18972	8917	11083											38972	20000
POS 1	18972	8917	7083											34972	16000
POS 2	18972	8917	7083											34972	16000
POS 3	16750	11139	4861											32750	16000
POS 4	16750	11139	4861											32750	16000