

Caterpillar 329D Excavator EX017



Make	Caterpillar		Model	329D	
Year		Hours	7307	As at	01/12/2019
Mileage				km	As at
Serial/VIN	CAT0329DJMNB00802			Engine Serial	
Details	Caterpillar 329D Excavator Asset no EX017. Offered for sale via online auction ex Site Nifty Copper Mine via Telfer Western Australia, running to drive on to buyers transport. See Google Maps link: https://goo.gl/maps/Xvaa3uBAFso9MP7A8				
Asking price	AUD	Under review - call for pricing			
Ex site	Australia, Western Australia, Telfer				

Service history	
------------------------	--

**For further details, to make an offer or book an inspection, contact
Global Equipment Solutions on Office: 08 9201 1142**















6.1.11 EX017 CATERPILLAR 329D

- Day services
- Arrived on site 4/4/2014

Asset Number	Model	Serial Number	Current SMU reading (hrs)	All-time SMU
EX017	329D	MNB00802	7307	7307

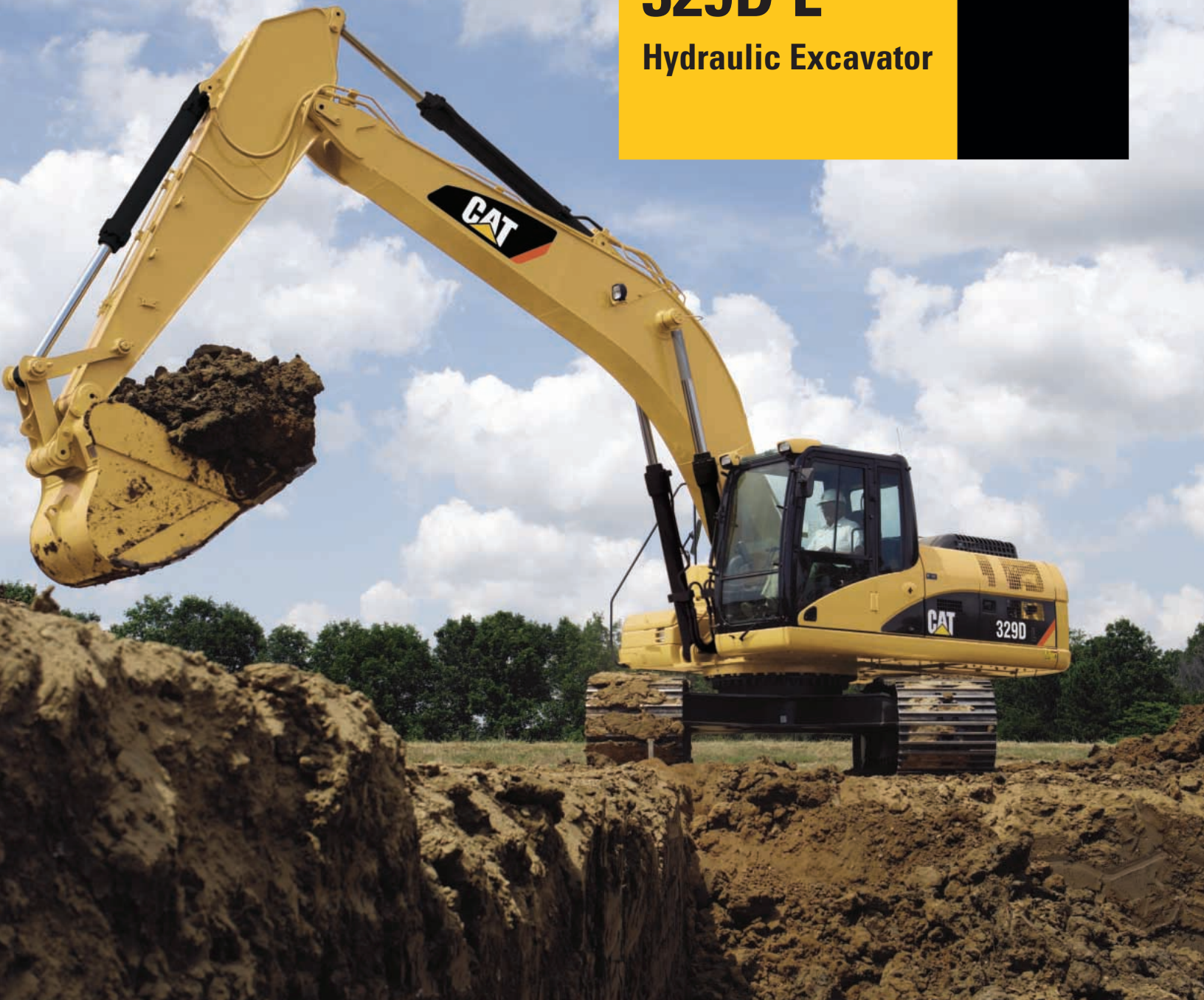
6.1.12 EX017 SUMMARY

Run, Available for care and maintenance.

329D/ 329D L

Hydraulic Excavator

CAT[®]



Engine

Engine Model	Cat [®] C7 with ACERT [™] Technology
Net Flywheel Power	152 kW

Weights

Operating Weight – Std. Undercarriage	26 900 kg
Operating Weight – Long Undercarriage	29 240 kg

Engine

Engine Model	Cat C7 with ACERT Technology
Net Flywheel Power	152 kW
Net Power – ISO 9249	152 kW
Bore	110 mm
Stroke	127 mm
Displacement	7.2 L

- Net power advertised is the power available at the flywheel when the engine is equipped with fan, air cleaner, muffler and alternator.
- No engine derating needed up to 2300 m.

Weights

Operating Weight – Std. Undercarriage	26 900 kg
Operating Weight – Long Undercarriage	29 240 kg

- Reach boom, R3.2CB2 Stick, 1.1 m³ Bucket, 600 mm Shoes
- Reach boom, R3.2CB2 Stick, 1.1 m³ Bucket, 800 mm Shoes

Track

Standard w/Standard Undercarriage	600 mm
Standard w/Long Undercarriage	800 mm
Optional	600 mm
Optional	700 mm
Optional	800 mm

Swing Mechanism

Swing Speed	10.2 rpm
Swing Torque	82.2 kN•m

Drive

Maximum Drawbar Pull	249 kN
Maximum Travel Speed	5.3 km/h

Hydraulic System

Main Implement System – Maximum Flow (2x)	235 L/min
Max. Pressure – Equipment	35 000 kPa
Max. Pressure – Travel	35 000 kPa
Max. Pressure – Swing	27 500 kPa
Pilot System – Maximum Flow	32.4 L/min
Pilot System – Maximum Pressure	3900 kPa
Boom Cylinder – Bore	140 mm
Boom Cylinder – Stroke	1407 mm
Stick Cylinder – Bore	150 mm
Stick Cylinder – Stroke	1646 mm
CB1 Family Bucket Cylinder – Bore	135 mm
CB1 Family Bucket Cylinder – Stroke	1156 mm
DB Family Bucket Cylinder – Bore	150 mm
DB Family Bucket Cylinder – Stroke	1156 mm

Service Refill Capacities

Fuel Tank Capacity	520 L
Cooling System	30 L
Engine Oil	30 L
Swing Drive	10 L
Final Drive (each)	6 L
Hydraulic System (including tank)	310 L
Hydraulic Tank	145 L

Sound Performance

Performance	ANSI/SAE
-------------	----------

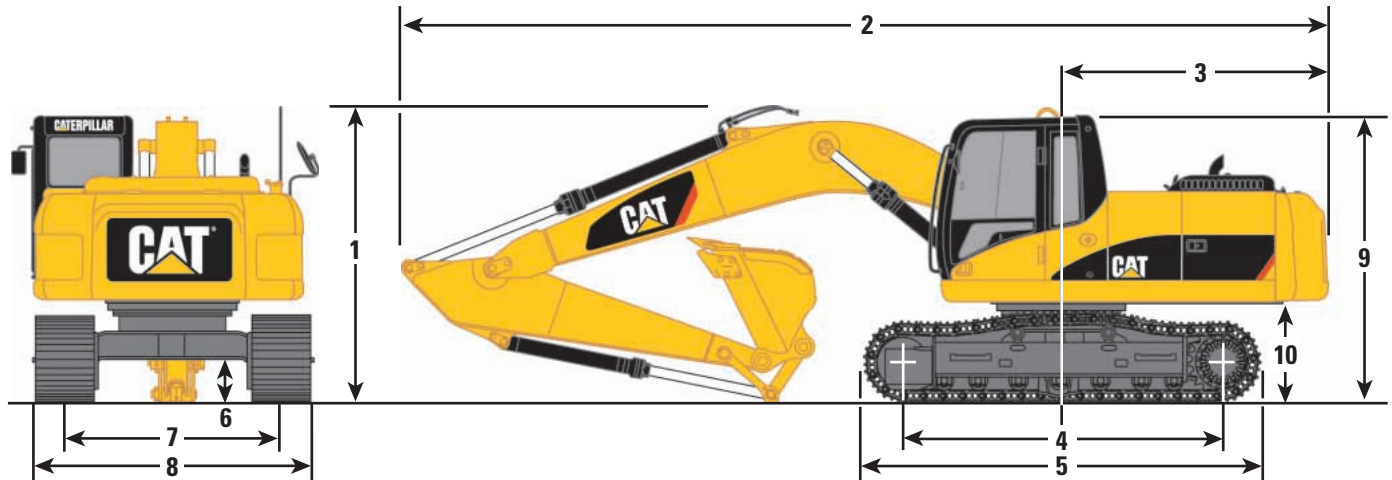
- When properly installed and maintained, the cab offered by Caterpillar, when tested with doors and windows closed according to ANSI/SAE J1166 OCT 98, meets OSHA and MSHA requirements for operator sound exposure limits in effect at time of manufacture.
- Hearing protection may be needed when operating with an open operator station and cab (when not properly maintained or doors/windows open) for extended periods or in noisy environment.

Standards

Brakes	SAE J1026 APR90
Cab/FOGS	SAE J1356 FEB88 ISO 10262

Dimensions

All dimensions are approximate.



Boom Options	Reach – 6.15 m		Mass – 5.55 m
Stick Options	R3.2CB2	R2.65CB2	M2.5DB
1 Shipping height**	3180 mm	3190 mm	3250 mm
2 Shipping length	10 410 mm	10 420 mm	9860 mm
3 Tail swing radius	3080 mm	3080 mm	3080 mm
Undercarriage	Fixed Gauge		Long Fixed Gauge
4 Length to centers of rollers	3490 mm		3990 mm
5 Track length	4360 mm		4860 mm
6 Ground clearance***	490 mm		490 mm
7 Track gauge	2390 mm		2590 mm
8 Shipping width*	2990 mm		3190 mm
9 Cab height**	3040 mm		3040 mm
10 Counterweight clearance***	1110 mm		1110 mm

* Track width shown is for 600 mm track shoes.

** Includes 30 mm shoe lug height.

*** Without 30 mm shoe lug height.

Major Component Weights

	kg
Base machine with counterweight and 600 mm shoes (without front linkage)	21 620
Two boom cylinders	548
Counterweight	
Standard Machine	5410
Boom (includes lines, pins and stick cylinder)	
Reach boom	2299
Mass boom	2374
Stick (includes lines, pins, bucket cylinder and linkage)	
R3.2CB2	1392
R2.65CB2	1299
M2.5DB	1455
Track roller frame [includes frame, rollers, idlers, steps, guards, final drive, 600 mm shoes] – each	9440

329D Bucket Specifications and Compatibility

	Capacity*	Width	Tip Radius	Weight (w/o tips)	Teeth	Total Weight	Reach Stick		Mass Stick
	m ³	mm	mm	kg	Qty	kg	R3.2CB2	R2.65CB2	M2.5DB
CB2 Buckets									
Excavation	1.1	1320	1555	857	5	857	●	●	—
	1.2	1420	1555	896	5	896	●	●	—
Heavy Duty	1.3	1390	1578	1033	6	1033	◐	●	—
Mass Excavation	1.5	1600	1578	1035	6	1035	◐	●	—
DB Buckets									
Excavation	1.4	1470	1660	1101	5	1101	—	—	●
	1.5	1560	1660	1144	5	1144	—	—	●
Mass Excavation	1.6	1540	1660	1191	6	1191	—	—	◐

329D L Bucket Specifications and Compatibility

	Capacity*	Width	Tip Radius	Weight (w/o tips)	Teeth	Total Weight	Reach Stick		Mass Stick
	m ³	mm	mm	kg	Qty	kg	R3.2CB2	R2.65CB2	M2.5DB
CB2 Buckets									
Excavation	1.1	1320	1555	857	5	857	●	●	—
	1.2	1420	1555	896	5	896	●	●	—
Heavy Duty	1.3	1390	1578	1033	6	1033	●	●	—
Mass Excavation	1.5	1600	1578	1035	6	1035	●	●	—
DB Buckets									
Excavation	1.4	1470	1660	1101	5	1101	—	—	●
	1.5	1560	1660	1144	5	1144	—	—	●
Mass Excavation	1.6	1540	1660	1191	6	1191	—	—	●

Assumptions for maximum material density rating:

1. Front linkage fully extended at ground line
2. Bucket curled
3. 100% bucket fill factor

* Based on SAE J296, some calculations of capacity specs fall on borderlines. Rounding may allow two buckets to have the same English rating, but different metric ratings.

- 2100 kg/m³ max material density
- ◐ 1800 kg/m³ max material density
- 1500 kg/m³ max material density
- ∴ 1200 kg/m³ max material density
- Not Available

329D/329D L Work Tool Matching Guide

Boom Options	Reach Boom – 6.15 m		Mass Boom – 5.55 m
Stick Options	R3.2CB2	R2.65CB2	M2.5DB
Hydraulic Hammer	H120Cs/ H130Cs/ H140Cs	H120Cs/ H130Cs/ H140Cs	H120Cs/ H130Cs/ H140Cs
Vibratory Plate Compactor	CVP110	CVP110	CVP110
Multi-Processor	MP15/MP20	MP15/MP20	n/a
360 Scrap Shear	S320	S320/S325	n/a
Trash Grapple	3.1 m ³	3.1 m ³	4.6 m ³
Contractors' Grapple	yes	yes	n/a
Hydraulic Thumb	yes	yes	n/a
Dedicated Quick Coupler	yes	yes	yes
Pin-Grabber Quick Coupler	yes	yes	yes